

# \$499,900 - 408 - 350 WEBB DRIVE

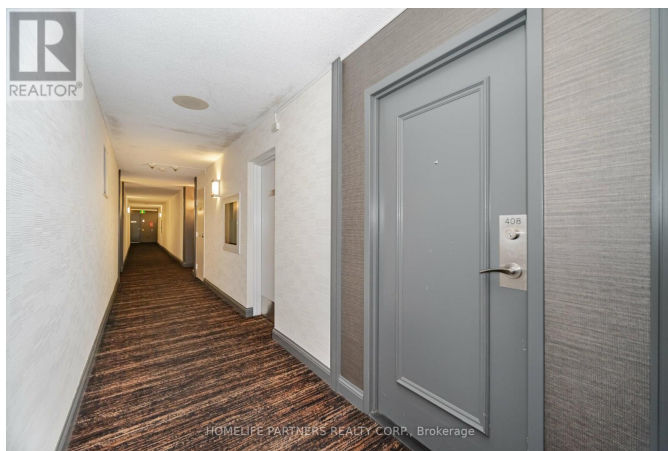
## Listing ID: W9239774

**\$499,900**

2 Bedrooms, 1 Bathrooms Single Family

408 - 350 WEBB DRIVE, Mississauga,  
Ontario, L5B3W4

Over 1000 sq.ft. opportunity to have a rarely available 1 Bedroom plus solarium unit! Amazing view overlooking the private park of the Condominium grounds. With Floor to Ceiling windows, every room of this suite has this view. Beautifully sun filled and spacious Eat-in Kitchen. Huge Primary Bedroom with expansive walk-in closet. Super spacious living and dining area combined. Ensuite Large Storage being approx. 7ft X 3ft. This suite is meticulously kept and freshly painted, cleaned and ready for you to take possession. Located in the Heart of Mississauga, this vibrant location is perfect for walking everywhere, including City Center, Art Center, Library, Plazas, Restaurants, Schools, Square One and more within walking distance. Transit is also a hop, skip or step away. \*\*\*\* EXTRAS \*\*\*\* Fridge, Stove, Dishwasher, Built-in Microwave Range, Stacked Washer & Dryer, ELF's, All Window Coverings. (id:54154)



MLS®, REALTOR®, and the associated logos are trademarks of The Canadian Real Estate Association

Data Provided by: Toronto Regional Real Estate Board

Last Modified: 05/08/2024 12:04:21 PM

Listing Office: HOMELIFE PARTNERS REALTY CORP.