

\$2850.00 / Monthly - 1013 - 33 ELM DRIVE W

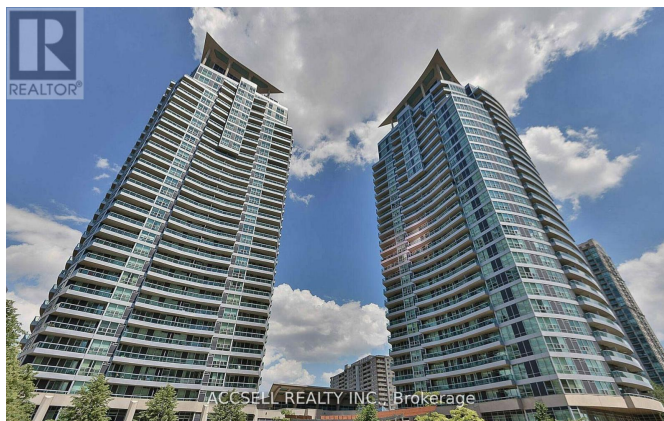
Listing ID: W9239020

\$2850.00 / Monthly

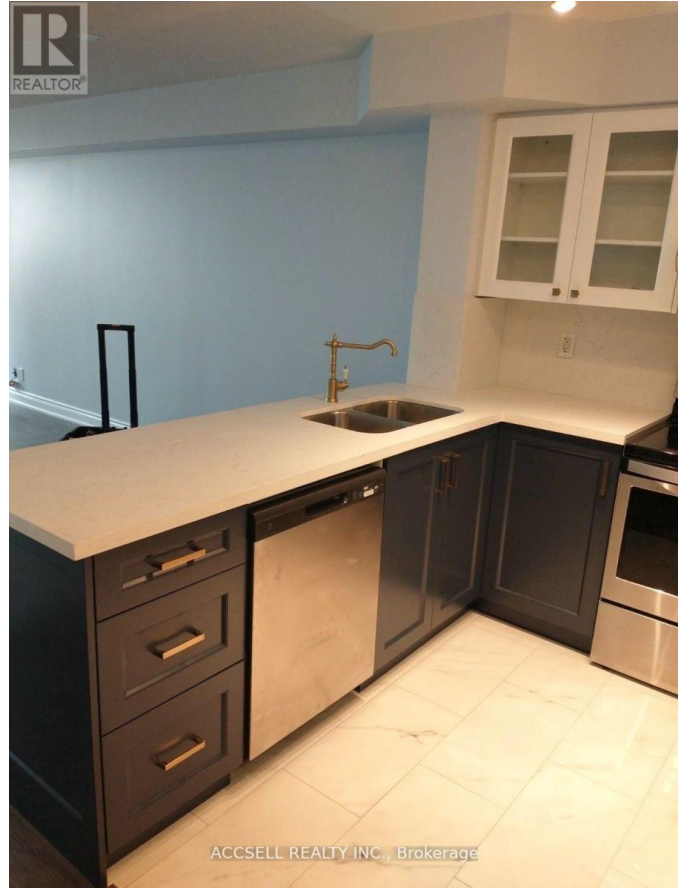
2 Bedrooms, 2 Bathrooms Single Family

1013 - 33 ELM DRIVE W, Mississauga,
Ontario, L5B4M2

Welcome to Unit 1013 located at 33 Elm Drive W. This unit is located in the most sought for community of City Center in Mississauga. This unit has been completely renovated and awaits its next tenant. It offers a one Bedroom plus a den space that can easily serve as a home office or mini gym, ensuring flexibility for your lifestyle needs. The unit also features two newly-renovated washrooms, giving you the complete private ensuite experience. The open-concept kitchen features modern stainless-steel appliances, sleek quartz countertops, and ample cabinet space. Unit 1013 also features a tandem parking spot, allowing for a 1.5-2 car parking space. This unit is just steps away from trendy cafes, gourmet restaurants, shopping boutiques, and public transit, offering both convenience and a urban living experience. Do not miss the opportunity, book your showing today! **** EXTRAS ****
Fridge, stove, b/i dishwasher, washer, dryer, existing window coverings and elfs.
(id:54154)



\$2850.00 / Monthly - 1013 - 33 ELM DRIVE W



MLS®, REALTOR®, and the associated logos are trademarks of The Canadian Real Estate Association

Data Provided by: Toronto Regional Real Estate Board

Last Modified: 03/08/2024 03:04:36 PM

Listing Office: ACCSELL REALTY INC.