

\$3200.00 / Monthly - 510 - 4655 METCALFE AVENUE

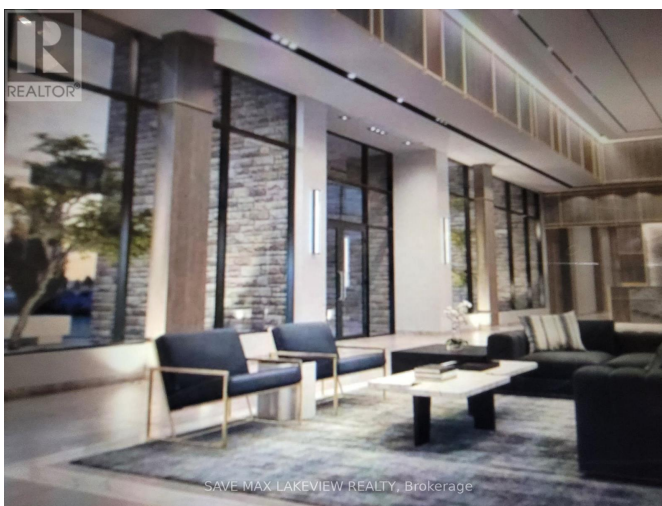
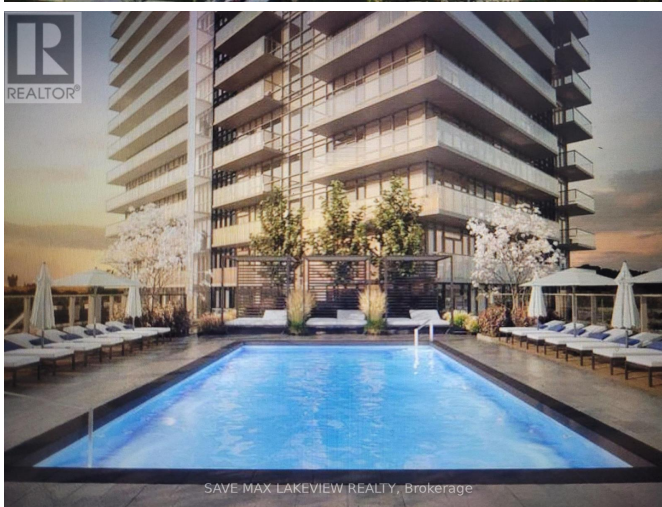
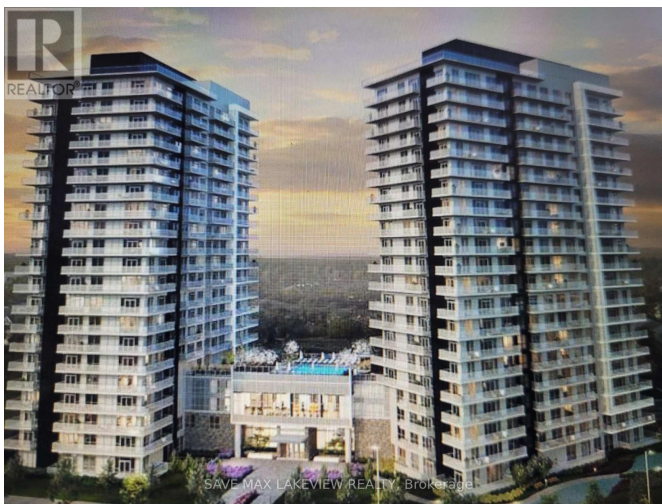
Listing ID: W9238394

\$3200.00 / Monthly

3 Bedrooms, 2 Bathrooms Single Family

510 - 4655 METCALFE AVENUE,
Mississauga, Ontario, L5M0Z7

Welcome To Erin Square By Pemberton Group! A Walker's Paradise - Steps To Erin Mills Town Centre's Endless Shops & Dining, Top Local Schools, Credit Valley Hospital, Quick Hwy Access & More! Beautiful Clean well maintained unit with Balcony, Open Views, Secure neighborhood renowned for its excellent schools, This exceptional residence boasts top-tier finishes, W/Rooftop Outdoor Pool, Terrace, Lounge, Bbq's, Fitness Club & More! 2+Den & 2 Bath. Parking & Locker Included. Embrace the opportunity to turn this exceptional condo into your permanent residence place where luxury meets practicality, ensuring a lifestyle of comfort and sophistication. (id:54154)



MLS®, REALTOR®, and the associated logos are trademarks of The Canadian Real Estate Association

Data Provided by: Toronto Regional Real Estate Board

Last Modified: 02/08/2024 06:34:30 PM

Listing Office:SAVE MAX LAKEVIEW REALTY