

# \$499,000 - 155 - 85 BRISTOL ROAD E

## Listing ID: W9237861

**\$499,000**

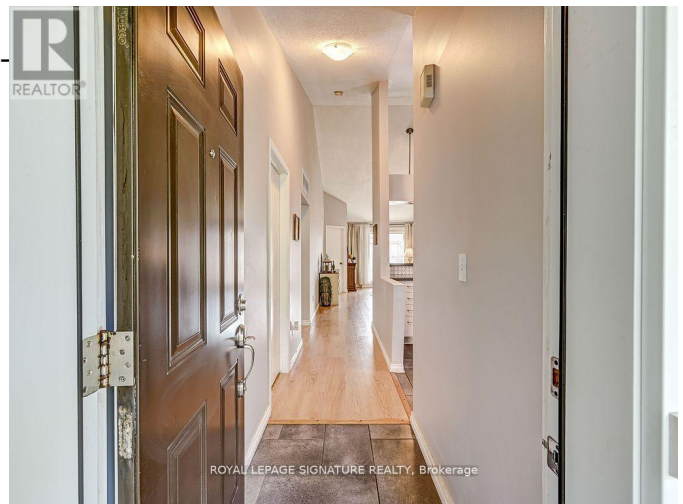
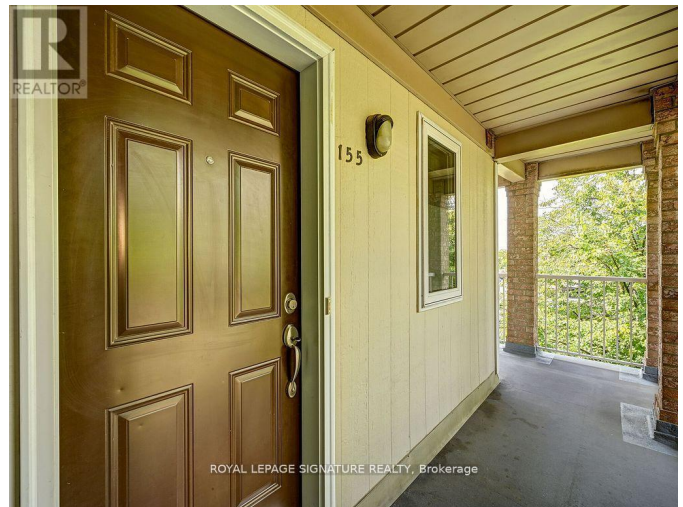
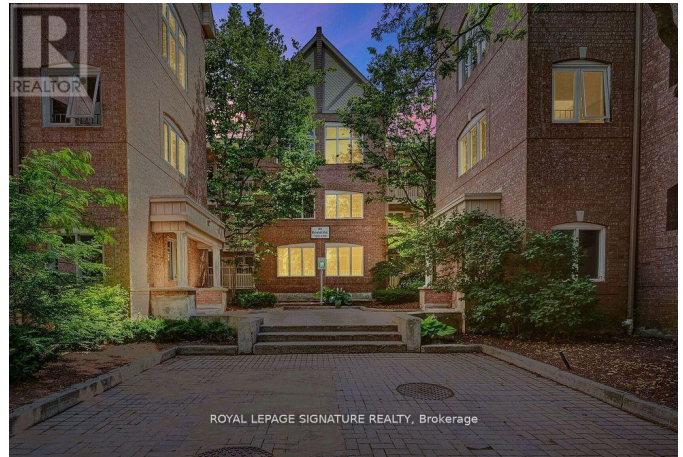
2 Bedrooms, 1 Bathrooms Single Family

155 - 85 BRISTOL ROAD E, Mississauga,  
Ontario, L4Z3P3

Discover the perfect family home in a highly sought-after, family-friendly complex! This stunning 2-bedroom corner suite offers a blend of comfort and convenience, making it an ideal choice for your next home. **KEY FEATURES:** Spacious Open Concept Layout: Enjoy the airy ambiance created by elegant cathedral ceilings and an abundance of natural light. Private Balcony: Relax and unwind in your own outdoor space. Added Conveniences: Featuring ensuite laundry, an ensuite locker, and a covered surface parking space, ensuring a hassle-free winter season. Family-Friendly Amenities: The complex boasts a kids' park and an outdoor pool, perfect for family fun. Prime Location: Centrally located with easy access to major bus routes and the upcoming Hurontario Light Rail Transit line, offering seamless transportation options. Close to two major highways (401 and 403), the upscale Square One mall and Heartland Towne Centre, major businesses and an elementary and high school just a short stroll away.

**\*\*Bonus\*\*** All furnishings and decor items are included. **\*\*\*\* EXTRAS \*\*\*\***

**\*\*Bonus\*\*** All furnishings and decor items are included. (id:54154)



# \$499,000 - 155 - 85 BRISTOL ROAD E

---

Data Provided by: Toronto Regional Real Estate Board

Last Modified: 03/08/2024 04:06:25 PM

Listing Office:ROYAL LEPAGE SIGNATURE REALTY