

\$2599.00 / Monthly - 211 - 3525 KARIYA DRIVE

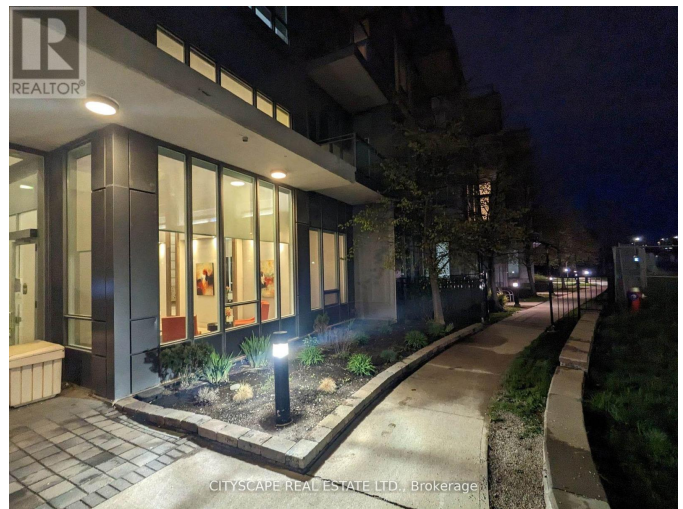
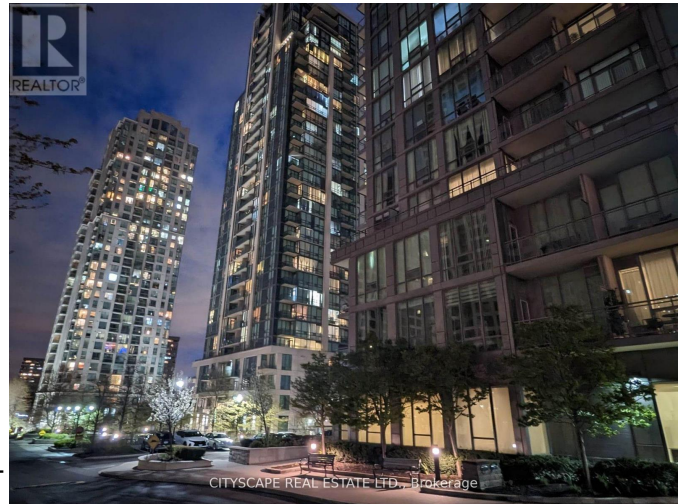
Listing ID: W9234548

\$2599.00 / Monthly

2 Bedrooms, 1 Bathrooms Single Family

211 - 3525 KARIYA DRIVE, Mississauga,
Ontario, L5B0C2

2 for the money! Double the value! Very spacious unit: 1 Bedroom PLUS 1 huge den-like second bedroom (why pay more for a technical 2 bedroom unit?). PLUS Large living room with 2 dining areas on each side - 1 dining area PLUS eat-in kitchen buffet... or can use as 2nd office space! Come see the space! ALSO: walking distance to 1) Square One & Shopping 2) GO station, MiWay & upcoming LRT. Great views of the Mississauga Skyline, live in 1) bustling city life convenience but also 2) quiet peaceful green surroundings! Also, included are 1 parking spot & 1 locker! Conveniently located on a lower floor, rarely offered, means easier access via elevators and closer to the great amenities! BOTH Water + Heat are included in the lease. **** EXTRAS **** Amenities include: concierge/security guard, visitors parking, guest suites, gym, indoor pool, sauna, party room, media room, games room, meeting room, car wash! (id:54154)



MLS®, REALTOR®, and the associated logos are trademarks of The Canadian Real Estate Association

Data Provided by: Toronto Regional Real Estate Board

Last Modified: 01/08/2024 08:14:30 AM

Listing Office: CITYSCAPE REAL ESTATE LTD.