

\$2200.00 / Monthly - 2801 - 360 SQUARE ONE DRIVE

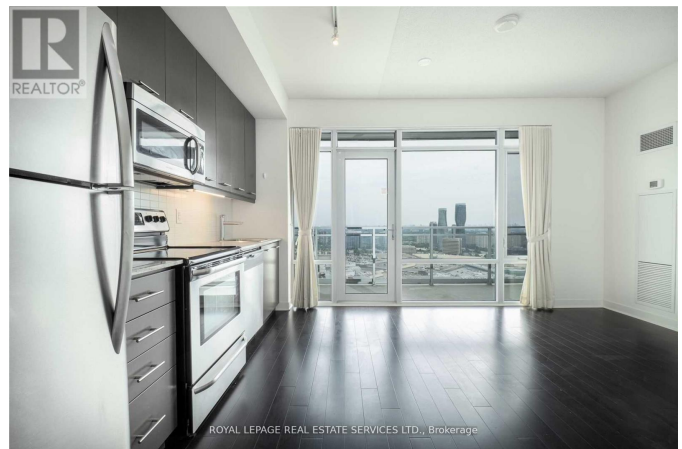
Listing ID: W9232980

\$2200.00 / Monthly

, 1 Bathrooms Single Family

2801 - 360 SQUARE ONE DRIVE,
Mississauga, Ontario, L5B0G7

Welcome to Daniels-Built Limelight North. This City Centre Studio Features unobstructed 28th floor North and West Views. Spacious Open Concept Floor Plan With Large Balcony. Granite Counter Tops and Stainless Steel Appliances. Walk to Sheridan College - Hazel McCallion Campus, Square One, Transit Hub, Central Library, City Hall and Celebration Square! No Car Needed! Building is Well Managed and Well Maintained. (id:54154)



MLS®, REALTOR®, and the associated logos are trademarks of The Canadian Real Estate Association

Data Provided by: Toronto Regional Real Estate Board

Last Modified: 31/07/2024 09:34:45 AM

Listing Office: ROYAL LEPAGE REAL ESTATE SERVICES LTD.