

\$3300.00 / Monthly - 2402 - 388 PRINCE OF WALES DRIVE

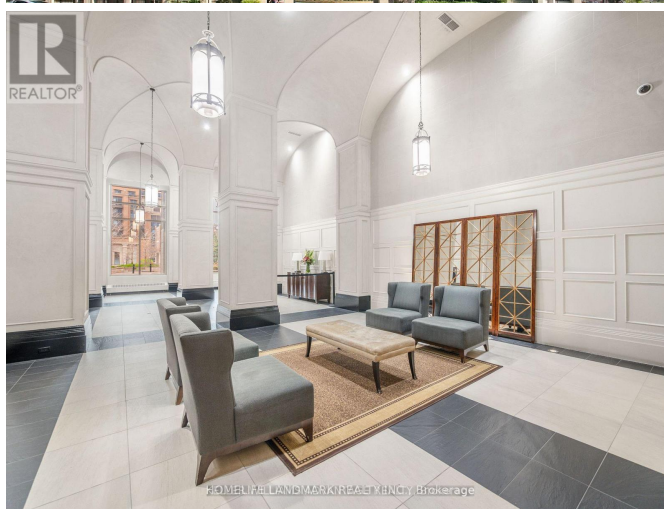
Listing ID: W9230413

\$3300.00 / Monthly

2 Bedrooms, 2 Bathrooms Single Family

2402 - 388 PRINCE OF WALES DRIVE,
Mississauga, Ontario, L5B0A1

This Is A Show Stopper. Centre Of Sq1 Area, 2 Bedroom + Den Corner Unit With Excellent Layout. Sw View Very Bright Corner Unit. Huge Den Is Separate Room. 9' Ceiling With Laminate Throughout. Wrap Around Balcony With Breathtaking View. Great Facilities And Classic Common Area, Lobby, Party Room Lounge, Indoor Pool, Gym, Etc. **** EXTRAS **** Located @ Center Of Sq1 Area, Close To Mall, Hr, College, Bus Terminal & Stations, Restaurants. Included All Existing Appliances & Furniture. Students & New Immigrations Welcome. (id:54154)



MLS®, REALTOR®, and the associated logos are trademarks of The Canadian Real Estate Association

Data Provided by: Toronto Regional Real Estate Board

Last Modified: 29/07/2024 02:36:12 PM

Listing Office: HOMELIFE LANDMARK REALTY INC.