

\$2450.00 / Monthly - 2105 - 4065 CONFEDERATION PARKWAY

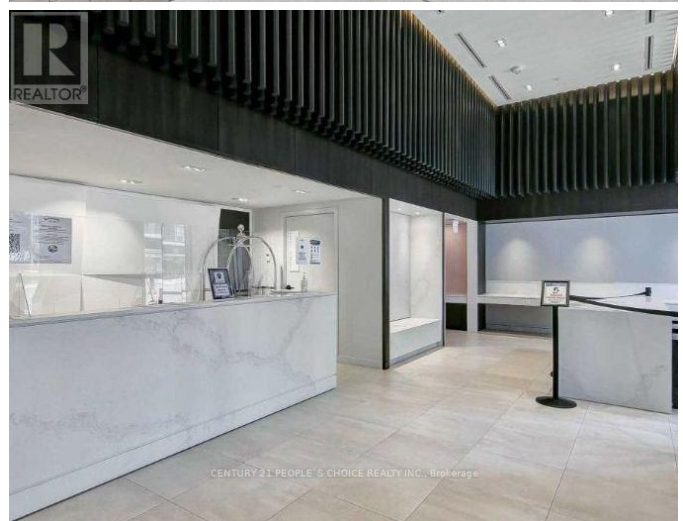
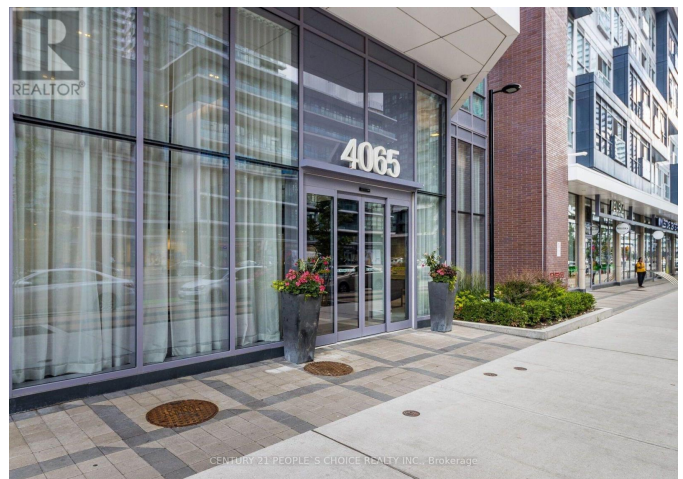
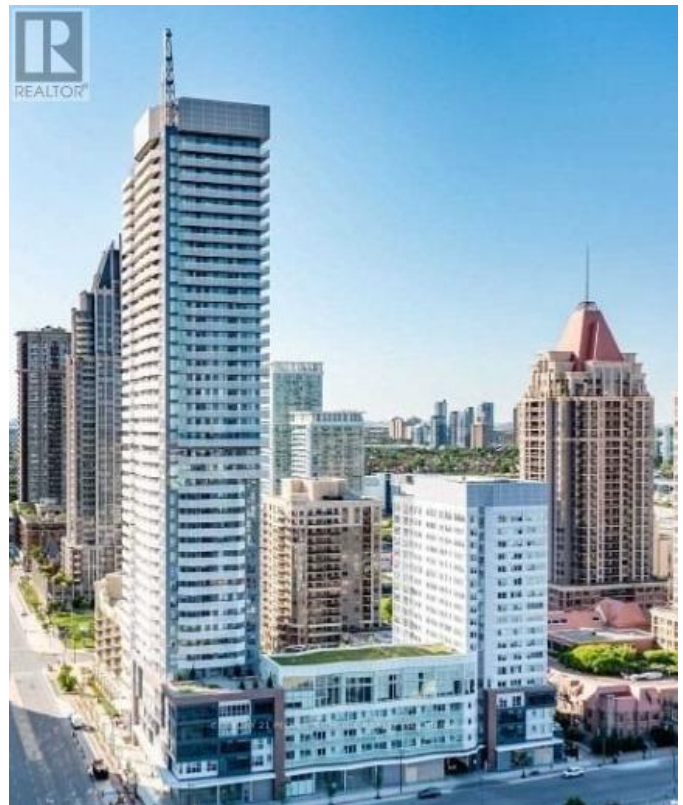
Listing ID: W9194903

\$2450.00 / Monthly

2 Bedrooms, 1 Bathrooms Single Family

2105 - 4065 CONFEDERATION
PARKWAY, Mississauga, Ontario,
L5B4N1

Great Location!! One Yr Old Unit By Daniels In A Prime Location Of The Heart Of Mississauga!!! 1 Bedroom With Den At Wesley Tower ! 9 Foot Ceilings, Laminate Flooring, Beautiful Big Windows With Lots Of Natural Light, Luxurious Kitchen With Modern Appliances & A Huge Kitchen Island. Located In The Heart Of Mississauga With Easy Access To Hwy 403/401, Walking Distance To Square One, Sheridan College And Public Transit. (id:54154)



\$2450.00 / Monthly - 2105 - 4065 CONFEDERATION PAR

MLS®, REALTOR®, and the associated logos are trademarks of The Canadian Real Estate Association

Data Provided by: Toronto Regional Real Estate Board

Last Modified: 04/08/2024 10:03:49 AM

Listing Office: CENTURY 21 PEOPLE'S CHOICE REALTY INC.