

\$765,000 - 2210 - 4675 METCALFE AVENUE

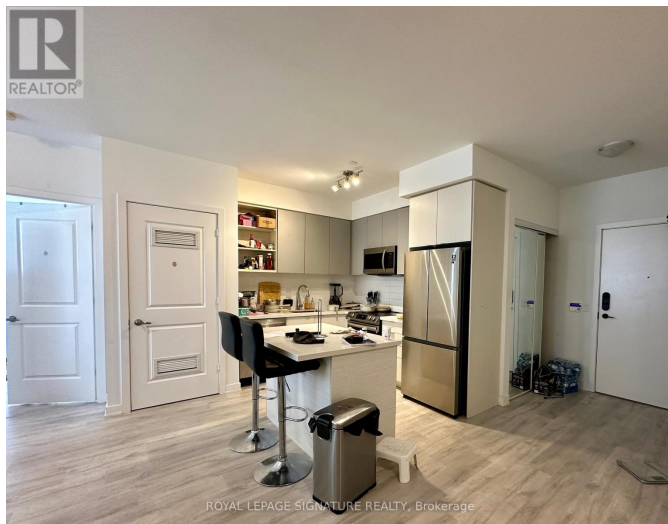
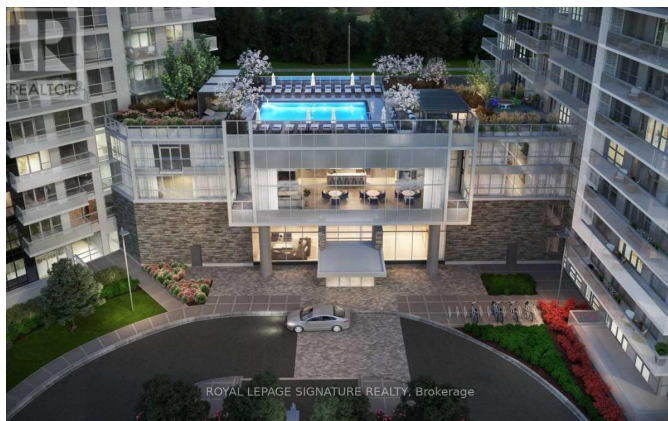
Listing ID: W9056327

\$765,000

3 Bedrooms, 2 Bathrooms Single Family

2210 - 4675 METCALFE AVENUE,
Mississauga, Ontario, L5M4N7

Rare, 2 Parking Space Unit (tandem). What A View!! Spacious 2 Bedroom Plus Den Condo In The Heart Of Erin Mills. Steps To Credit Valley Hosp, Miway, Erin Mills Town Center And All Amenities. Visitor Parking, 2 Parking Spaces, Pool, Security, Gym, Included. Penthouse Unit. Wide Plank Flooring Throughout Living Spaces, Ceramic In Baths, Ensuite Laundry., Locker, bike room. Upgraded Island in kitchen, 9' Smooth Ceilings, 7 1/2" Wide Plank Laminate Flooring Throughout, Porcelain Floor Tiles In Bathroom, Stainless Appliances, Stone Counter Tops. Internet Included. **** EXTRAS **** Tenants vacating. Vacant possession Sept 15 (N11 signed) (id:54154)



MLS®, REALTOR®, and the associated logos are trademarks of The Canadian Real Estate Association

Data Provided by: Toronto Regional Real Estate Board

Last Modified: 25/07/2024 11:35:19 PM

Listing Office:ROYAL LEPAGE SIGNATURE REALTY