

\$565,000 - 2208 - 33 ELM DRIVE W

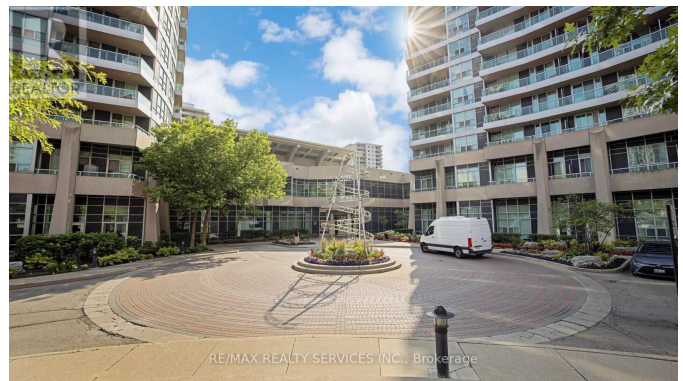
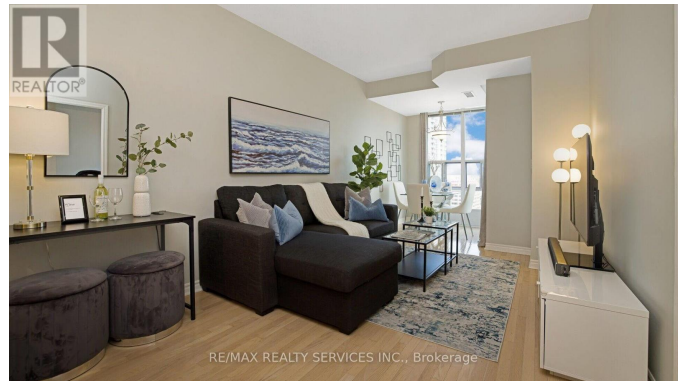
Listing ID: W9053741

\$565,000

2 Bedrooms, 1 Bathrooms Single Family

2208 - 33 ELM DRIVE W, Mississauga,
Ontario, L5B4M2

Welcome To This Owner Occupied Beautiful, Move-In Ready Unit With Breathtaking Views from 22nd floor and one Parking Space and one Locker. The Open Concept Kitchen Features Stainless Steel Appliances, Updated Hardware, Granite Counter Tops That Are Sure To Impress. Featuring Hardwood Floors Throughout The Living Area, 9' Ceilings, A Den Perfectly Suited For An Office with stylish French Doors, with Dining Area Nook Makes This Unit One Of The Best Functional Layouts and Preferred Choice within Buyers. Unit Includes Parking & Locker. The No 1 City Center Condos Offer one of the Lowest Maintenance fees and Resort Like Amenities. Minutes to Major Highways, Upcoming LRT Station, Square One & Celebration Square & Cooksville Go Station. Other Amenities include: 24hr Concierge, Indoor Pool, Billiards, Table Tennis, Guest Suites, Hot Pond, Steam Sauna, Gym, Yoga Room, Sauna, Party Room and Children Play Park and Convenience Store Within Premises, Parking & Locker (id:54154)



MLS®, REALTOR®, and the associated logos are trademarks of The Canadian Real Estate Association
Data Provided by: Toronto Regional Real Estate Board
Last Modified: 02/08/2024 05:05:43 PM
Listing Office:RE/MAX REALTY SERVICES INC.