

# \$2550.00 / Monthly - 405 - 220 MISSINNIHE WAY

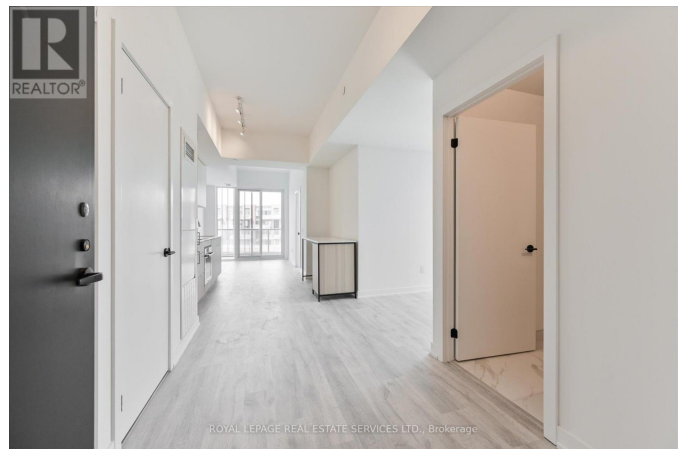
## Listing ID: W9053206

**\$2550.00 / Monthly**

2 Bedrooms, 2 Bathrooms Single Family

405 - 220 MISSINNIHE WAY,  
Mississauga, Ontario, L5H0A9

Discover modern living in this stunning 1+1 bedroom, 2-bathroom condo in the luxurious Brightwater Condominium Development. This north-facing unit is bathed in natural light and features a private balcony with picturesque views. Enjoy the convenience of en suite laundry and a designated parking space. The open-concept layout includes a sleek kitchen with contemporary finishes, a beautiful master suite with an en suite bath, and a versatile den. The Brightwater community offers exclusive amenities such as a fitness center, yoga and meditation room, party room, entertainment lounge, sun deck, outdoor BBQ and dining area, a pet spa, bike storage, co-working space, and a business center. Plus, benefit from a complimentary shuttle service to the Port Credit GO Station for easy commuting. With 24-hour security and a prime location near shopping, dining, and public transit, this condo is an exceptional find. (id:54154)



MLS®, REALTOR®, and the associated logos are trademarks of The Canadian Real Estate Association

Data Provided by: Toronto Regional Real Estate Board

Last Modified: 29/07/2024 10:05:53 AM

Listing Office:ROYAL LEPAGE REAL ESTATE SERVICES LTD.