

# \$499,900 - LPH10 - 4070 CONFEDERATION PARKWAY

## Listing ID: W9052001

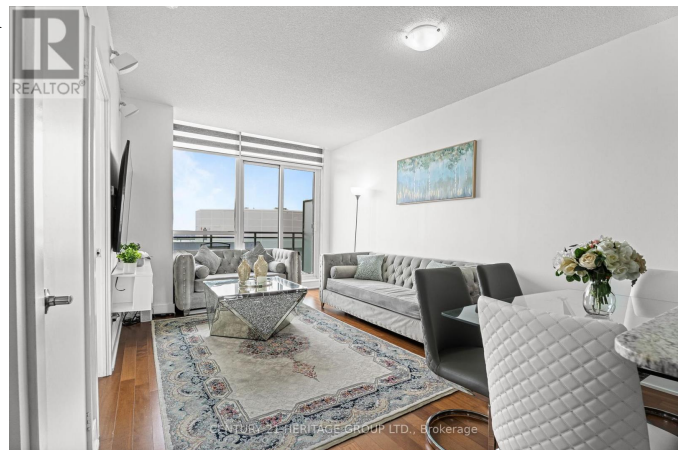
**\$499,900**

1 Bedrooms, 1 Bathrooms Single Family

LPH10 - 4070 CONFEDERATION  
PARKWAY, Mississauga, Ontario, L5B0E9

The Pinnacle Of Elegance And Comfort In This Exquisite Lower Penthouse Suite. With Breathtaking Views, Modern Amenities, And Upgrade Interiors, PANORAMIC Views: Enjoy Picturesque cityscapes Right From Your Living Room. Modern Design: Sleek, Upgraded Flooring, Top-Of-The-Line Appliances. Perfect For Entertaining And Relaxation. Upgraded Water Filter System With Reverse Osmosis, Luxurious Soaker Tub, And Zebra Blinds.

Conveniently Located Within Walking Distance To All Downtown Amenities, Including The Living Arts Centre, Sheridan College, Mohawk College, Square One Mall, And The GO Station. Close Proximity To The University Of Toronto Mississauga Campus. Experience The Unique Opportunity To Live Among The Clouds. Don't Miss Out On The Opportunity To Call This Luxurious Penthouse Your New Home. Book Now For Your Private Viewing. \*\*\*\* EXTRAS \*\*\*\* Media Room, Gym, Pool, Sauna, Hot Tub, Yoga Studio, Party Room, Library, Guest Suites, Business Center W/ WIFI, Board Room, Outdoor Patio & BBQ Area, Dog Walk Area & Playground, Kids Play Room, Show Kitchen, Key Fob Access for Security. (id:54154)



# \$499,900 - LPH10 - 4070 CONFEDERATION PARKWAY

---

Data Provided by: Toronto Regional Real Estate Board  
Last Modified: 23/07/2024 07:17:48 PM  
Listing Office: CENTURY 21 HERITAGE GROUP LTD.