

\$3200.00 / Monthly - 1710 - 4655 METCALFE AVENUE

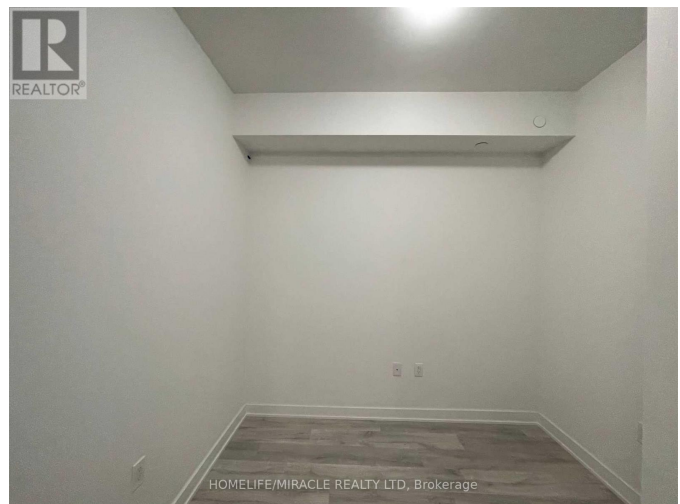
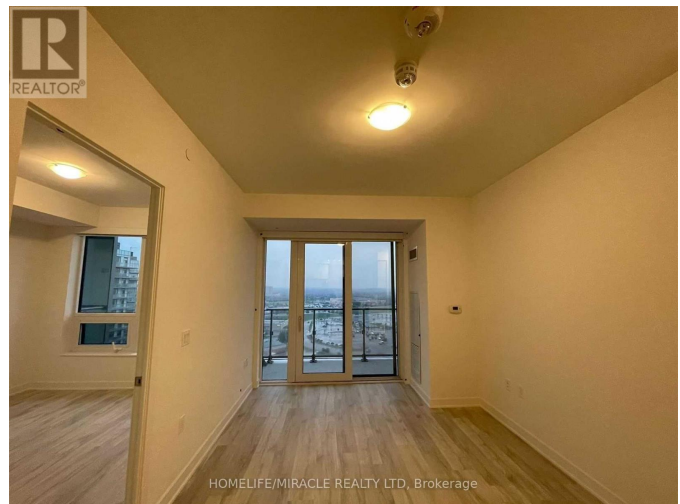
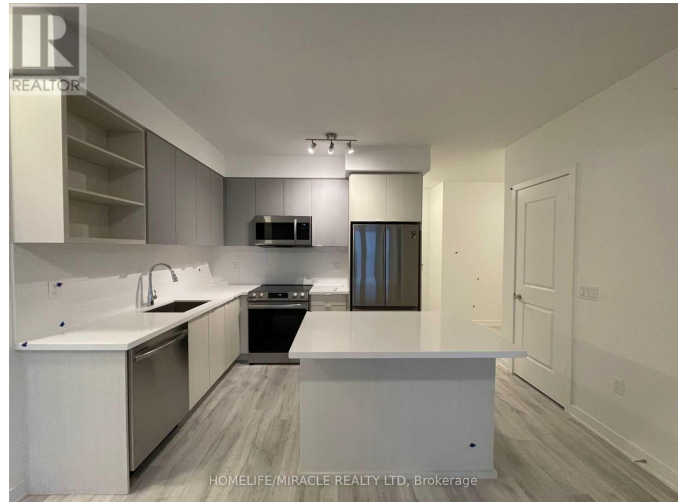
Listing ID: W9051637

\$3200.00 / Monthly

3 Bedrooms, 2 Bathrooms Single Family

1710 - 4655 METCALFE AVENUE,
Mississauga, Ontario, L5M0Z7

Welcome To Erin Square By Pemberton Group! A Walker's Paradise - Steps To Erin Mills Town Centre's Endless Shops & Dining, Top Local Schools, Credit Valley Hospital, Quick Hwy Access & More! Landscaped Grounds & Gardens. Building Amenities Include: 24Hr Concierge, Guest Suite, Games Rm, Children's Playground, Rooftop Outdoor Pool, Terrace, Lounge, Bbqs, Fitness Club, Pet Wash Stn & More! 2+Den, 2 Bath W/ Balcony. West Exposure. Parking & Locker Included. (id:54154)



MLS®, REALTOR®, and the associated logos are trademarks of The Canadian Real Estate Association

Data Provided by: Toronto Regional Real Estate Board

Last Modified: 23/07/2024 05:38:51 PM

Listing Office: HOMELIFE/MIRACLE REALTY LTD