

# \$688,000 - 2209 - 3975 GRAND PARK DRIVE

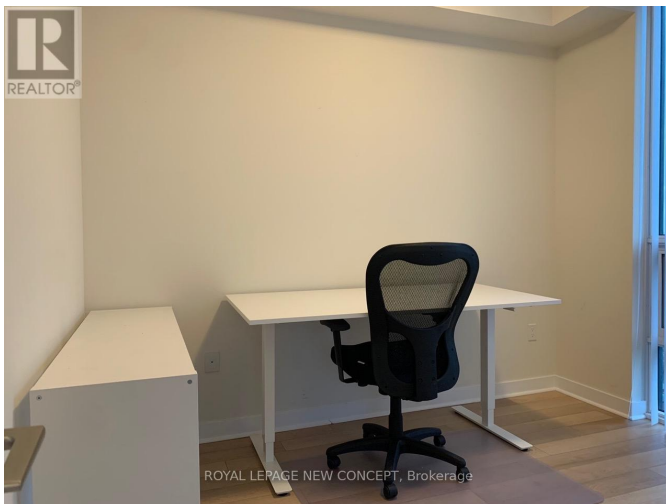
**Listing ID: W9048465**

**\$688,000**

3 Bedrooms, 2 Bathrooms Single Family

2209 - 3975 GRAND PARK DRIVE,  
Mississauga, Ontario, L5B4M6

Modern Design Pinnacle Grand Park 2 Condo!! In the Heart of Mississauga City Centre. Well Maintained 2 Bed + Study with 2 Full Baths, Corner Unit, 923 Sqft + 120 Sqft Balcony, One Parking + One Locker, 9Ft Ceiling, Modern Layout, Large Kitchen with Breakfast Bar & Granite Countertop. Walking distance To Square One Mall, Shops, Groceries, Restaurants, City Hall, YMCA, Library & Parks. Easy Access to Hwy's 403/401, Public Transit & Future LRT. Living Arts, Sheridan College & U of T. Great Amenities: Indoor Pool, Gym, Sauna, Guest Suites & Visitor Parking. (id:54154)



MLS®, REALTOR®, and the associated logos are trademarks of The Canadian Real Estate Association

Data Provided by: Toronto Regional Real Estate Board

Last Modified: 21/07/2024 01:32:54 PM

Listing Office:ROYAL LEPAGE NEW CONCEPT