

\$559,000 - 1015 - 35 TRAILWOOD DRIVE

Listing ID: W9044309

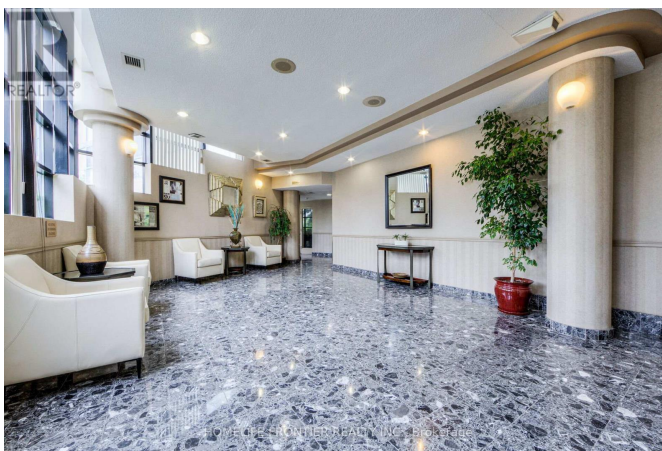
\$559,000

2 Bedrooms, 2 Bathrooms Single Family

1015 - 35 TRAILWOOD DRIVE,
Mississauga, Ontario, L4Z3L6

Welcome to a place where comfort meets convenience, right in the vibrant heart of Mississauga! This meticulously renovated, spacious condo offers over 1100 sqft of comfort and style. You'll love the thoughtful layout that foods the open concept living and dining areas with natural light, thanks to the floor-to-ceiling windows showing off a jaw dropping sunset. The two generously sized bdrms provide plenty of space to unwind. The gourmet kitchen is a dream for anyone who loves to cook, featuring sleek stainless-steel appliances. Plus, the convenience of ensuite laundry adds an extra touch of ease to your daily routine. Step outside and enjoy being just a short walk from shopping centers, community facilities, libraries, parks, cafes, and much more. For those who commute, you'll appreciate the easy access to major highways and public transportation, including the GO station, making travel throughout the GTA a breeze ****

EXTRAS **** n'hood caters to everyone. Minutes from schools, parks & Frank McKechnie Centre. Enjoy specialty food stores & superstores like Ocean Fresh Foods/Walmart. Easy access to 403, 401, TTC access to Cooksville/Port Credit GO. fees include all utilities (id:54154)



\$559,000 - 1015 - 35 TRAILWOOD DRIVE

MLS®, REALTOR®, and the associated logos are trademarks of The Canadian Real Estate Association

Data Provided by: Toronto Regional Real Estate Board

Last Modified: 18/07/2024 11:37:22 AM

Listing Office:HOMELIFE FRONTIER REALTY INC.