

\$597,000 - 1411 - 35 WATERGARDEN DRIVE

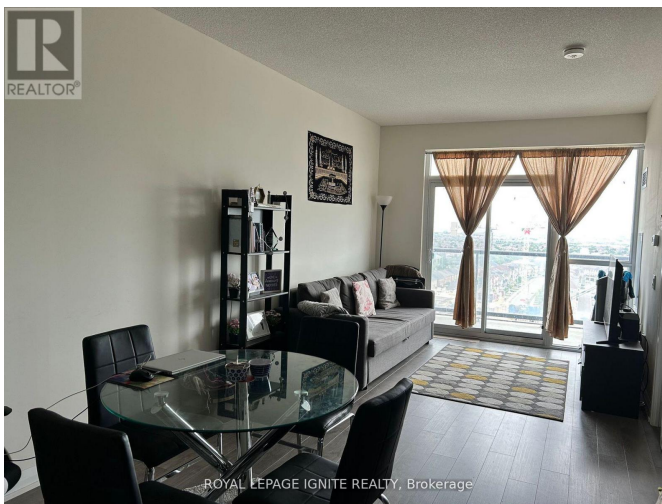
Listing ID: W9044157

\$597,000

2 Bedrooms, 1 Bathrooms Single Family

1411 - 35 WATERGARDEN DRIVE,
Mississauga, Ontario, L5R0G8

Great Location well connected to Transit and Highways. 1 Bedroom + Den Suite! 688 Sq. Ft Interior +115 Sq. Ft Balcony! Laminated Floors, Open Concept Living/Dining Area Balcony. A Modern Kitchen With Designer Kitchen Cabinetry, Ceramic Backsplash, Under Cabinet Lighting & Stainless-Steel Appliances. Spacious Primary Bedroom With A Large Mirrored Closet & A Large Den. 1 Parking & 1 Locker Included! (id:54154)



MLS®, REALTOR®, and the associated logos are trademarks of The Canadian Real Estate Association

Data Provided by: Toronto Regional Real Estate Board

Last Modified: 01/08/2024 05:05:28 PM

Listing Office:ROYAL LEPAGE IGNITE REALTY