

\$599,000 - 301 - 265 ENFIELD PLACE

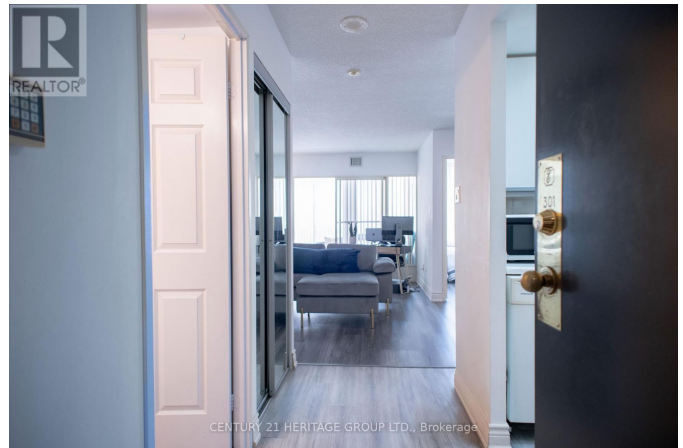
Listing ID: W9040802

\$599,000

3 Bedrooms, 2 Bathrooms Single Family

301 - 265 ENFIELD PLACE, Mississauga,
Ontario, L5B3Y7

Prime location in Mississauga across from Square One. Beautiful and functional layout. Bright, South-facing unit looking over the courtyard. Approximately 900SqFt, with 2 bedrooms, 2 baths and a large Solarium can be a third bedroom. Master bedroom with 4-pc ensuite. Laminate floor throughout, full facilities including indoor pool, sauna, gym, tennis court, 24-hour security, public transit at door, steps to Square One and restaurants. Easy access to HWY 403. **** EXTRAS **** All electric light fixtures, window coverings, fridge, stove, dishwasher, washer and dryer. One parking spot and one locker. (id:54154)



MLS®, REALTOR®, and the associated logos are trademarks of The Canadian Real Estate Association

Data Provided by: Toronto Regional Real Estate Board

Last Modified: 18/07/2024 01:52:56 PM

Listing Office: CENTURY 21 HERITAGE GROUP LTD.