

\$2600.00 / Monthly - 511 - 388 PRINCE OF WALES DRIVE

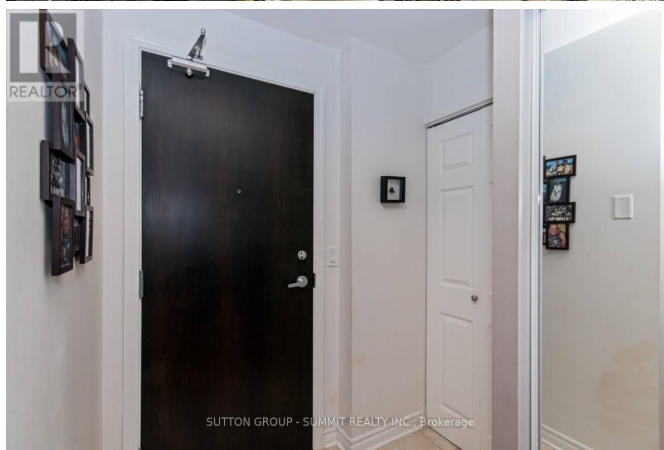
Listing ID: W9036477

\$2600.00 / Monthly

2 Bedrooms, 2 Bathrooms Single Family

511 - 388 PRINCE OF WALES DRIVE,
Mississauga, Ontario, L5B0A1

Well maintained 1 bedroom + den, 2 full bathroom ""Frankfurt"" model, located in the desirable One Park Tower. Large open balcony with eastern exposure. Kitchen features stainless steel appliances with granite counters and breakfast bar, open to the living/dining room with hardwood flooring. Den with extra storage. Full 3 pc. bathroom. Primary bedroom with 4 pc. ensuite bathroom. In-Suite laundry. No smoking. The building boasts many amenities to enjoy. Conveniently located steps to Square One, parks, GO bus, transit, library, Sheridan College, City Hall & more. **** EXTRAS **** Locker - Level P2 #236 (area 8), Parking - Level P2 #190 (by stair 2). RSA. (id:54154)



MLS®, REALTOR®, and the associated logos are trademarks of The Canadian Real Estate Association

Data Provided by: Toronto Regional Real Estate Board

Last Modified: 12/07/2024 05:38:20 PM

Listing Office: SUTTON GROUP - SUMMIT REALTY INC.