

# \$3700.00 / Monthly - 1306 - 220 MISSINNIHE WAY

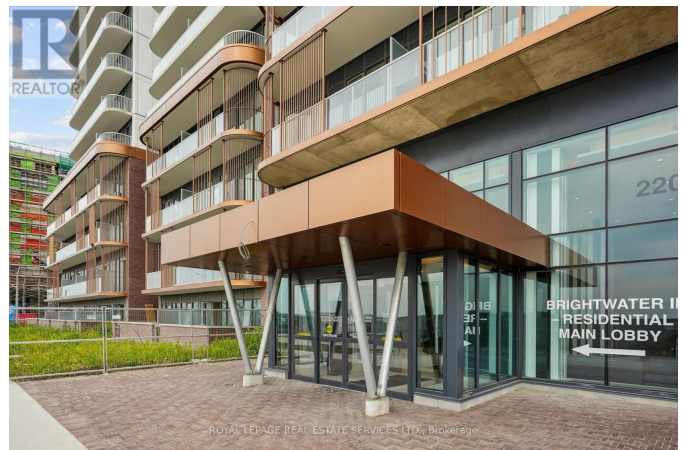
## Listing ID: W9035574

**\$3700.00 / Monthly**

3 Bedrooms, 2 Bathrooms Single Family

1306 - 220 MISSINNIHE WAY,  
Mississauga, Ontario, L5H0A9

Welcome to the epitome of luxury living at the prestigious Brightwater Condos in Port Credit. This brand new 2-bedroom plus den suite offers an unparalleled lifestyle with its exquisite finishes and breathtaking views. Step inside to discover a space adorned with premium built-in appliances, engineered flooring, and spa-inspired bathrooms, all designed to offer a sense of sophistication and comfort. The south-facing suite boasts unobstructed views of the serene waterfront and the stunning downtown Toronto cityscape, ensuring that every day begins and ends with a picturesque panorama. Included with this suite are one parking space and a private locker, providing both convenience and security. Residents of Brightwater Condos enjoy access to an array of premium amenities, including a state-of-the-art fitness center and a tranquil yoga studio, along with the attentive service of a dedicated concierge. Just steps away, the vibrant community of Port Credit awaits, offering boutique shops, diverse dining options, charming cafes, and the beautiful Port Credit Harbour and Marina. Experience the best of urban waterfront living in this luxurious condominium at Brightwater. (id:54154)



# \$3700.00 / Monthly - 1306 - 220 MISSINNIHE WAY

---

Data Provided by: Toronto Regional Real Estate Board

Last Modified: 12/07/2024 01:38:07 PM

Listing Office:ROYAL LEPAGE REAL ESTATE SERVICES LTD.