

# \$1,059,000 - 220 - 80 PORT STREET E

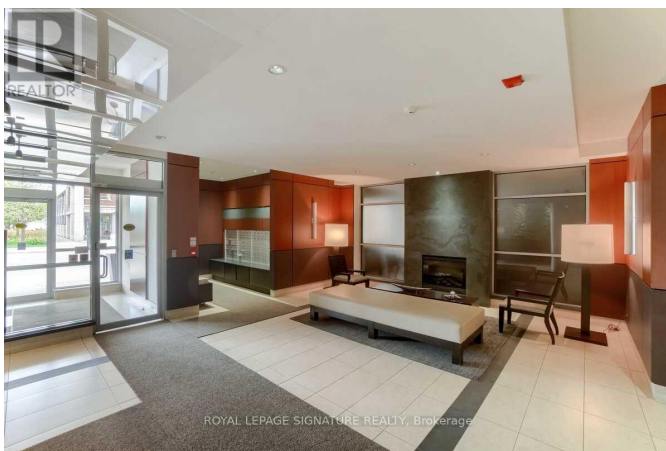
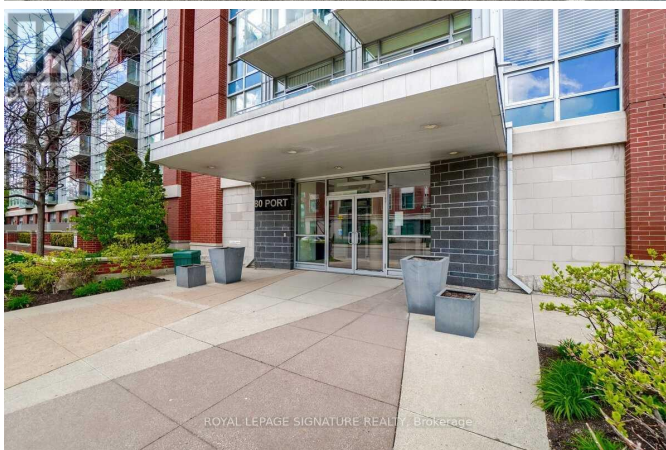
## Listing ID: W9031800

**\$1,059,000**

2 Bedrooms, 2 Bathrooms Single Family

220 - 80 PORT STREET E, Mississauga,  
Ontario, L5G4V6

A rare opportunity to own a beautiful two-level Condo in the Heart of downtown Port Credit. This two-bedroom, two-bathroom condo faces north and south for plenty of bright light. New, Luxury Vinyl floors on the main level with a hardwood staircase leading to engineered hardwood on the upper level. A Juliette balcony overlooks Port Credit living, with a large balcony off the Primary Bedroom overlooking the Gardens. Many Upgrades. Steps to Shopping, amazing dining and entertainment, Parks, Waterfront, Marina, Library, Schools, Bike path, outdoor pool, HWY, Go-train, and new Crosstown. Endless activities and outdoor summer events. An amazing community atmosphere. \*\*\*\* EXTRAS \*\*\*\* Great Townhouse-Condo living. (id:54154)



MLS®, REALTOR®, and the associated logos are trademarks of The Canadian Real Estate Association

Data Provided by: Toronto Regional Real Estate Board

Last Modified: 10/07/2024 03:38:47 PM

Listing Office: ROYAL LEPAGE SIGNATURE REALTY