

\$1,448,000 - PH10 - 1055 SOUTHDOWN ROAD

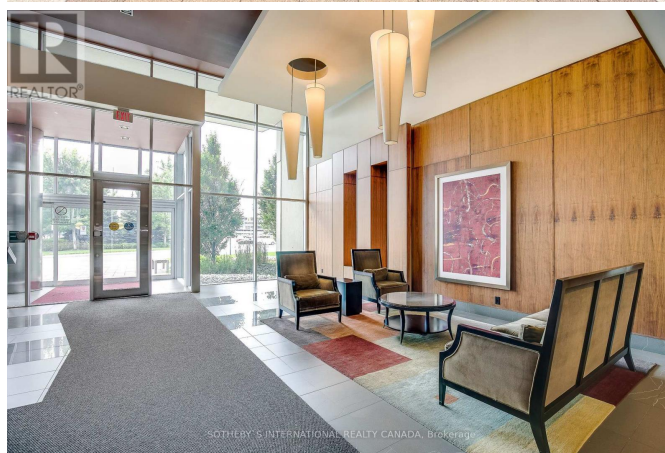
Listing ID: W9020028

\$1,448,000

3 Bedrooms, 3 Bathrooms Single Family

PH10 - 1055 SOUTHDOWN ROAD,
Mississauga, Ontario, L5J0A3

Your bungalow in the sky awaits. Perched upon the 17th floor of the Stonebrook Condos, this bespoke 3 bedroom plus den, penthouse unit has everything you can ask for. With over 2400 square feet of living space, two parking spots and a large storage locker there is ample room for down sizers or a family. The large living and dining room areas boast floor to ceiling windows, Brazilian hardwood floors and 180 degree views; spanning downtown Toronto to the shores of Oakville. The large modern chef's kitchen with premium appliances has a 4-burner gas stove plus grill, a large centre island that can comfortably seat 4 and hickory cabinetry. The primary bedroom is a private oasis featuring an exclusive balcony, a walk-in closet, and a spa-like ensuite that is fully accessible. The second bedroom has a walk out to the 127 sqft south facing balcony, with breathtaking views of Lake Ontario. This balcony can also be accessed through the living area. The third bedroom is currently being used as a family room but can be easily converted to a bedroom. 9' ceilings help create a feeling of lightness and warmth. A condo this size is unique and hard to find. Discover luxurious living at its best in South Mississauga. **** EXTRAS **** Steps to Clarkson Village, The Go Train &



\$1,448,000 - PH10 - 1055 SOUTHDOWN ROAD

Shopping. Award worthy amenities include gym, pool, sauna, party room, theatre, games room, guest suites, pet spa & so much more. Maintenance fees include Fibe internet, cable, gas and 24hr security. (id:54154)

MLS®, REALTOR®, and the associated logos are trademarks of The Canadian Real Estate Association
Data Provided by: Toronto Regional Real Estate Board
Last Modified: 09/07/2024 07:34:38 PM
Listing Office: SOTHEBY'S INTERNATIONAL REALTY CANADA