

\$819,000 - 2415 - 35 WATERGARDEN DRIVE

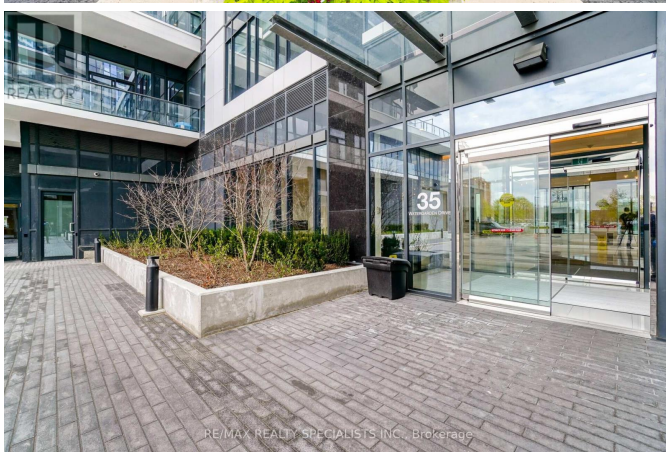
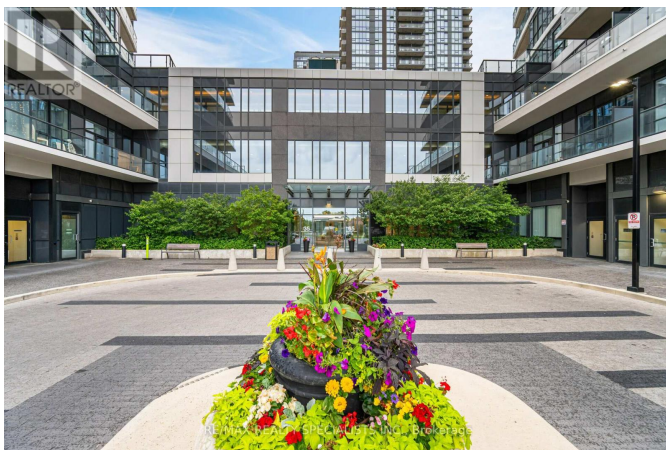
Listing ID: W9019456

\$819,000

3 Bedrooms, 2 Bathrooms Single Family

2415 - 35 WATERGARDEN DRIVE,
Mississauga, Ontario, L5R0G8

Beautiful, bright and new condo apartment located in a prime and highly convenient location in Mississauga. Spacious 2 bedroom + den (which can easily be used as an office and/or made into a separate room). 1,002 total SqFt (885 SqFt interior + 117 SqFt balcony). Large balcony offers spectacular unobstructed views of the city, lake and parks. 9Ft Ceiling, S/S Appliances. Extra wide parking spot. Close to public transit, restaurants, Square One Shopping Centre, bus terminal, major highways and future LRT. Perfect for first-time home buyers, downsizers or investors! **** EXTRAS **** All Elfs. Stainless Steel Appliances: Fridge, Stove, Dishwasher, B/I Microwave. Washer & Dryer. 1 Locker and 1 Parking included. (id:54154)



MLS®, REALTOR®, and the associated logos are trademarks of The Canadian Real Estate Association

Data Provided by: Toronto Regional Real Estate Board

Last Modified: 09/07/2024 01:37:41 PM

Listing Office:RE/MAX REALTY SPECIALISTS INC.