

# \$2450.00 / Monthly - 618 - 21 PARK STREET E

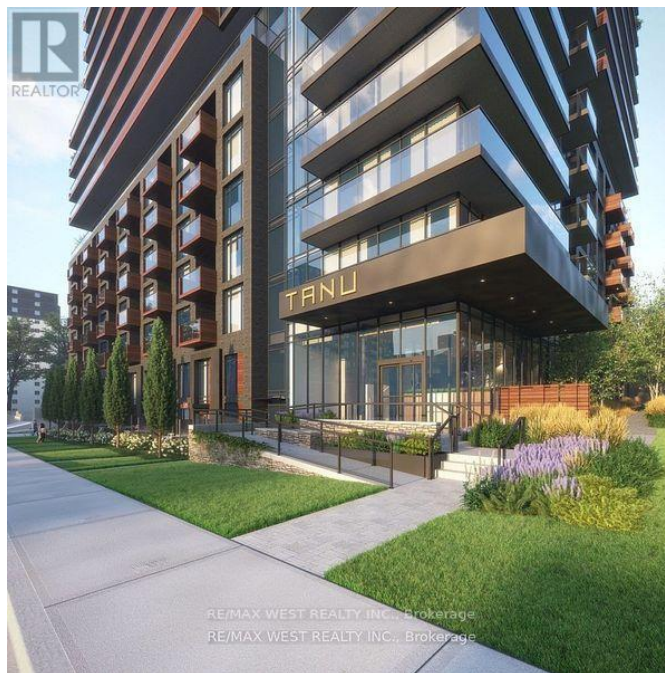
## Listing ID: W9017940

**\$2450.00 / Monthly**

1 Bedrooms, 1 Bathrooms Single Family

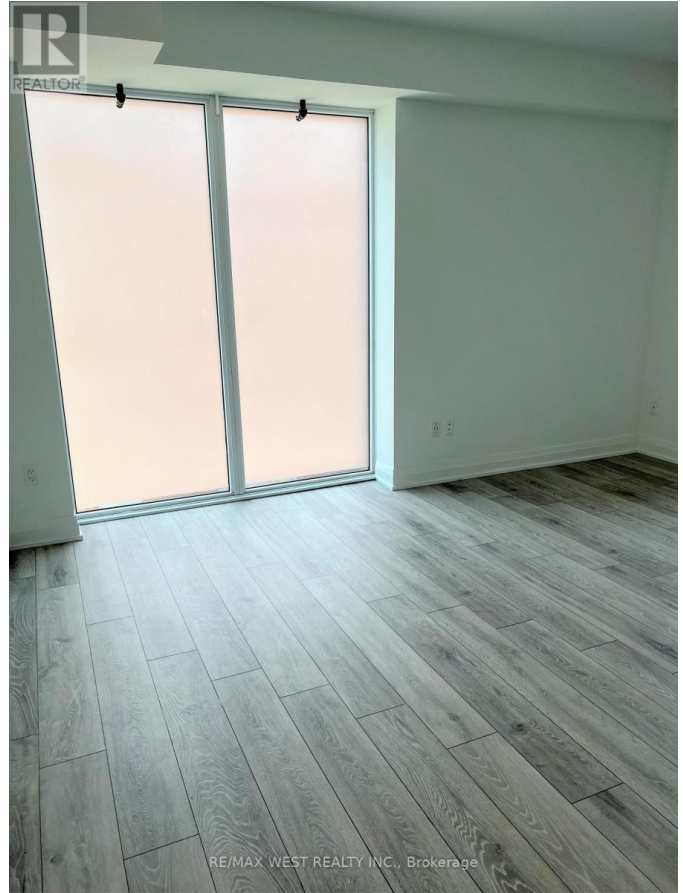
618 - 21 PARK STREET E, Mississauga,  
Ontario, L5G1L7

Welcome To TANU - Luxuries Unit In The Heart Of Trendy And Vibrant Port Credit Neighborhood. Floor To Ceiling Windows - Natural Light. Massive Living/Dining Room Combine With Kitchen, Large Sliding Doors To Large South View Patio (107 Sq. Ft.). Premium Laminated Flooring Throughout Unit, With Large Double Closets In Foyer. Built-In Appliance, Ensuite Washer And Dryer. Short Walk To GO Port Credit Station, Lake, Park And Cafes/Restaurants. 24 Hour Concierge/Security. (id:54154)



# \$2450.00 / Monthly - 618 - 21 PARK STREET E

---



MLS®, REALTOR®, and the associated logos are trademarks of The Canadian Real Estate Association  
Data Provided by: Toronto Regional Real Estate Board  
Last Modified: 09/07/2024 01:01:07 AM  
Listing Office:RE/MAX WEST REALTY INC.