

\$2800.00 / Monthly - 3006 - 8 NAHANI WAY

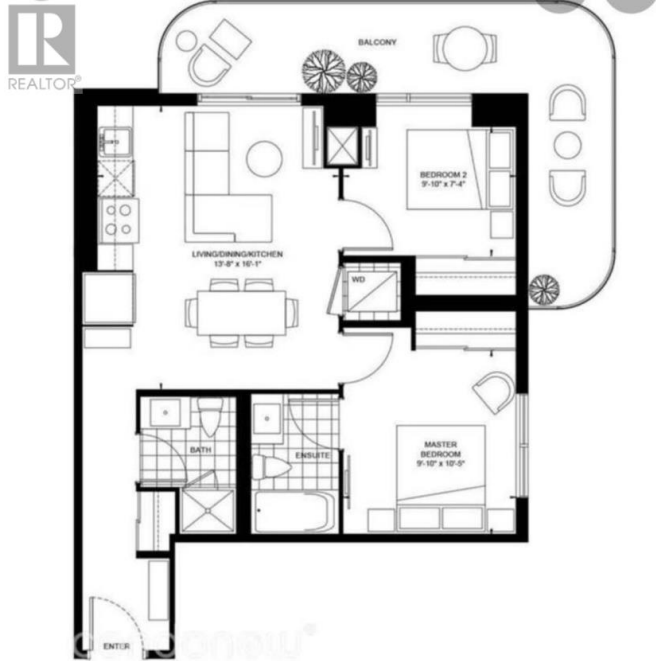
Listing ID: W9011245

\$2800.00 / Monthly

2 Bedrooms, 2 Bathrooms Single Family

3006 - 8 NAHANI WAY, Mississauga,
Ontario, L4Z0C6

Experience stunning views from this high-floor corner 2-bedroom unit with a wraparound balcony at Mississauga Square by Plazacorp. This luxurious condo includes parking and a locker. Enjoy top-notch amenities such as a 24-hour concierge, fitness and yoga center, outdoor pool, terrace with BBQs, party room, games room, and guest suites. Located near Square One, Celebration Square, Sheridan College, the GO Bus Terminal, schools, parks, and the future LRT, this unit offers both convenience and luxury. (id:54154)



\$2800.00 / Monthly - 3006 - 8 NAHANI WAY



MLS®, REALTOR®, and the associated logos are trademarks of The Canadian Real Estate Association

Data Provided by: Toronto Regional Real Estate Board

Last Modified: 09/07/2024 12:55:24 AM

Listing Office:CENTURY 21 EMPIRE REALTY INC