

# \$719,900 - 910 - 21 PARK STREET E

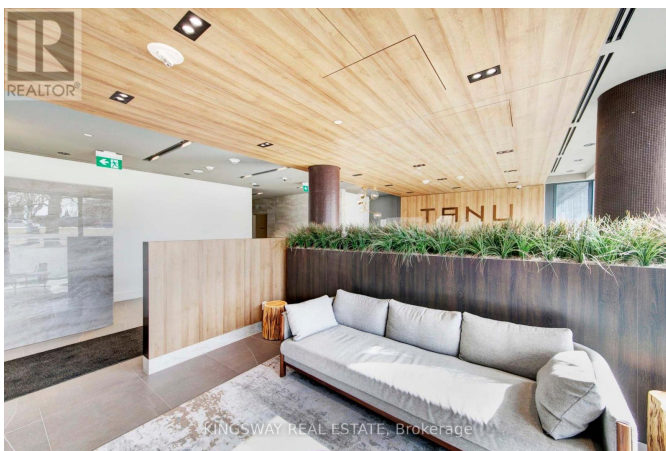
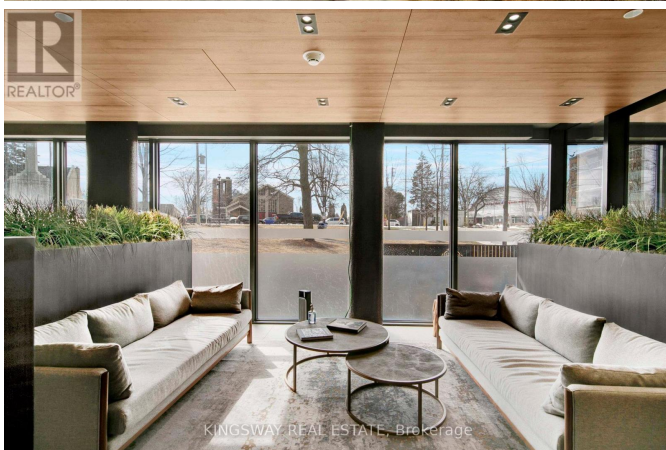
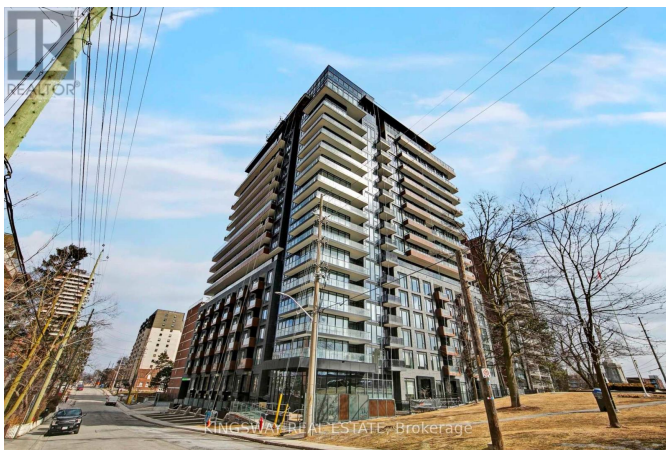
**Listing ID: W9009968**

**\$719,900**

2 Bedrooms, 2 Bathrooms Single Family

910 - 21 PARK STREET E, Mississauga,  
Ontario, L5G1L7

Welcome To Your New Life By the Lake!  
Port Credit's Tanu Luxury Condo Building.  
Steps To The Marina, Restaurants & Shops.  
This Spacious 1 Bed + Den 2 Bath Features  
A Clear View, Hardwood Floors, Flr To  
Ceiling Windows, Modern Kitchen W  
Custom Island, Panelled B/I High End  
Appliances & Quartz Counter. Smart Home  
Technology & 9 FT Ceilings- Keyless  
Entry, License Plate Recognition, 24 Hour  
Concierge. Amenities Incl Gym, Car Wash,  
Billiards & Game Rm. One Parking  
Included. Rogers Wifi Internet Included.  
Vacant Possession! (id:54154)



MLS®, REALTOR®, and the associated logos are trademarks of The Canadian Real Estate Association

Data Provided by: Toronto Regional Real Estate Board

Last Modified: 09/07/2024 12:54:09 AM

Listing Office:KINGSWAY REAL ESTATE