

# \$3200.00 / Monthly - 706 - 220 MISSINNIHE WAY

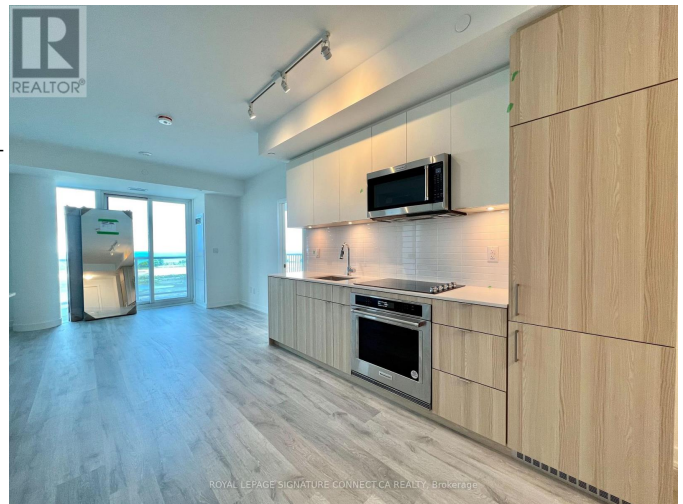
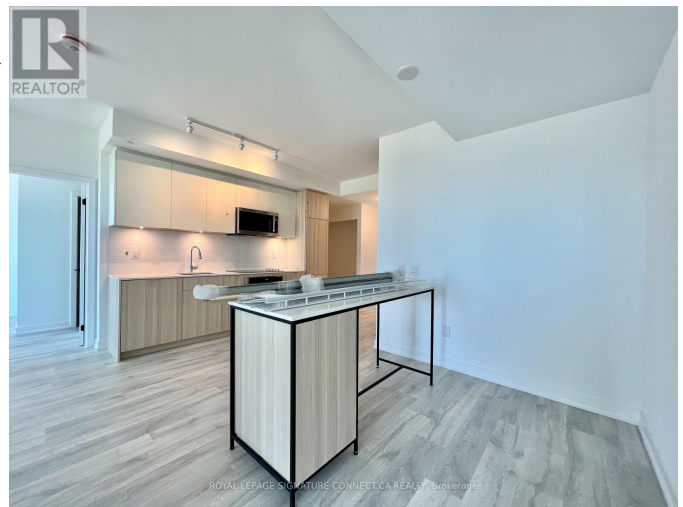
## Listing ID: W9009523

**\$3200.00 / Monthly**

3 Bedrooms, 2 Bathrooms Single Family

706 - 220 MISSINNIHE WAY,  
Mississauga, Ontario, L5H0A9

Wake up to water views in this spacious 2 bed room + den at Brightwater, Port Credit's most anticipated waterfront community! Featuring 10 Ft Ceilings, 2 full bathrooms, a Stone Kitchen Island, In Suite Laundry + a Huge sunny balcony overlooking the lake. Large Separate Den is perfect for a home office. Enjoy The Conveniences Of Living In Mississauga's most Thoughtfully Designed Master Planned Community With Everything You Need At Your Doorstep From Grocery Stores To Coffee Shops, Restaurants. Enjoy The Outdoors? You Are Minutes From The Stunning Waterfront With Tons Of Trails To Walk And Bike Along! Residents Benefit From A Free Community Shuttle To The GO Station! 1 parking spot + Rogers High speed internet Included! \*\*\*\* EXTRAS \*\*\*\* 5 Star Amenities Include: Fitness Centre, Co-Working Space, Sauna, Rooftop Lounge, Open Air Swim Spa, Sundeck, BBQ's, Party Rooms + More! 1 parking spot + Rogers High speed internet Included! (id:54154)



MLS®, REALTOR®, and the associated logos are trademarks of The Canadian Real Estate Association

Data Provided by: Toronto Regional Real Estate Board

Last Modified: 15/07/2024 01:37:08 PM

Listing Office: ROYAL LEPAGE SIGNATURE CONNECT.CA REALTY