

\$3500.00 / Monthly - 153 - 5530 GLEN ERIN DRIVE

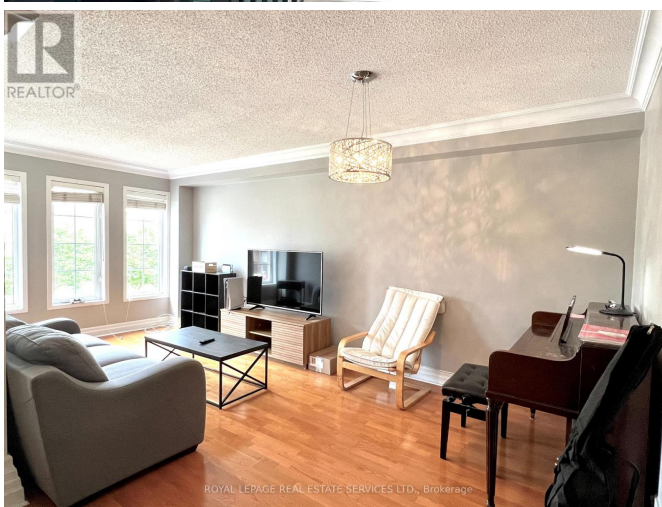
Listing ID: W9004594

\$3500.00 / Monthly

3 Bedrooms, 4 Bathrooms Single Family

153 - 5530 GLEN ERIN DRIVE,
Mississauga, Ontario, L5M6E8

Furnished Townhome in a Desirable Neighborhood, Over 1600Sqft Above Grade Of Sunny East & West Exposures. Open Concept Living/Dining Room. Large Kitchen with Central Island. Currently Family Room Used as Dining Room. Breakfast Area Walk Out to Balcony. Primary Bedroom with Sitting Area Facing East has 4pc Ensuite & Walk-In Closet. Lower-Level Recreation Room or Family Room Area Walk Out to Backyard with 2pc Washroom and Access to Garage. Sugar Maple Woods Trail Near the Complex. Parks, Trails & Soccer Field Near By. All Amenities at Your Doorstep. Top Ranked School Dist. Incl John Fraser & Gonzaga. Walking Distance To Castlebridge Elem School W/French Immersion Program, Steps to Thomas Middle School, Parks. Close to Community Centre, Erin Mills Centre, Shopping Mall, Hospital. Very Convenient Transits, Streetsville Go Train Station, Easy Acc to Hwy 401,403 & 407. **** EXTRAS **** New Balcony, Upgraded Light Fixtures, Crown Moldings on Main Floor and Primary Bedroom. Direct Access To Garage. Tenant To Pay All Utilities And Tenants Insurance. . (id:54154)



\$3500.00 / Monthly - 153 - 5530 GLEN ERIN DRIVE



MLS®, REALTOR®, and the associated logos are trademarks of The Canadian Real Estate Association

Data Provided by: Toronto Regional Real Estate Board

Last Modified: 24/07/2024 07:34:31 PM

Listing Office:ROYAL LEPAGE REAL ESTATE SERVICES LTD.