

\$3550.00 / Monthly - 1501 - 21 PARK STREET E

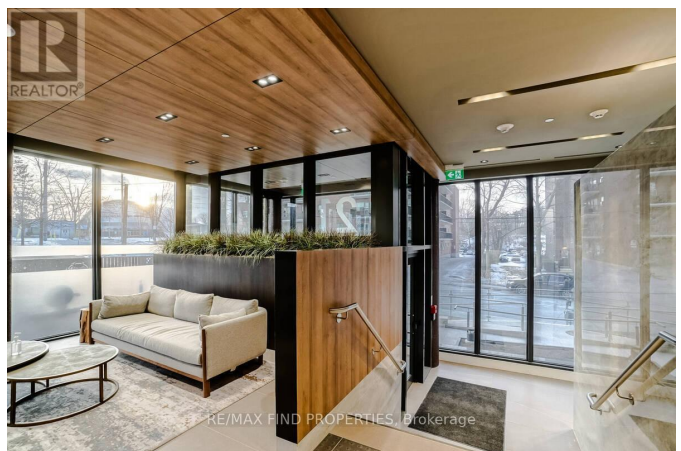
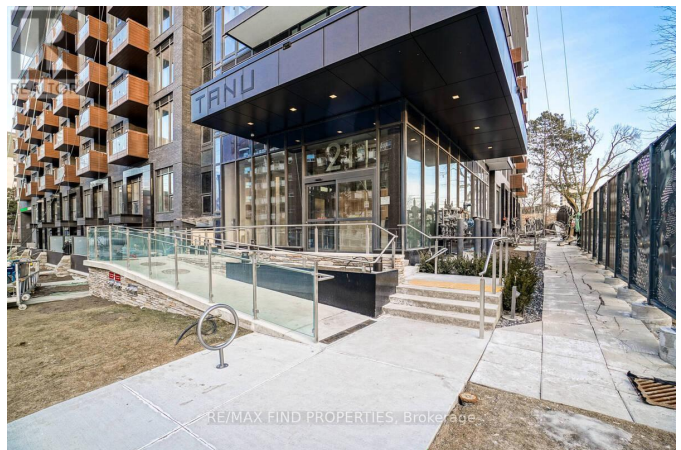
Listing ID: W8491178

\$3550.00 / Monthly

2 Bedrooms, 2 Bathrooms Single Family

1501 - 21 PARK STREET E, Mississauga,
Ontario, L5G0C2

Designed By Ibi Group, Tanu Fuses Natural Materials-Contemporary Architecture To Create A Warm,SophisticatedCondominium Residence. Steps To Waterfront Parks, Trails, Restaurants, Retail,& Port Credit Go Station. 2Bdrm & 2 Bath Open Living Area Makes Great Space For Entertaining. Spacious L-Shaped Balcony Minutes To: Lake, Parks, Go, Boutiques, Cafes & More. Enjoy Sunsets And More In This Th With Smart HomeTechnology- Non smokers as per rules and regulations **** EXTRAS **** Absolutely no AirBnB, VRBO, 3RD Party or short term leases. (id:54154)



MLS®, REALTOR®, and the associated logos are trademarks of The Canadian Real Estate Association

Data Provided by: Toronto Regional Real Estate Board

Last Modified: 03/08/2024 09:04:05 AM

Listing Office:RE/MAX FIND PROPERTIES