

\$599,000 - 1903 - 360 SQUARE ONE DRIVE

Listing ID: W8488040

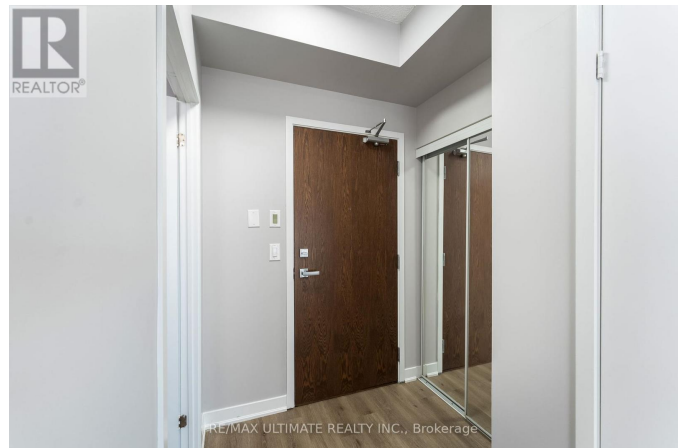
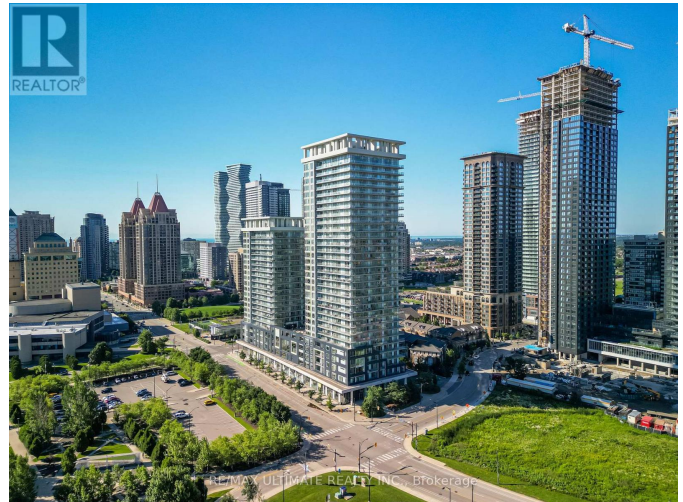
\$599,000

2 Bedrooms, 1 Bathrooms Single Family

1903 - 360 SQUARE ONE DRIVE,
Mississauga, Ontario, L5B0G7

Discover the epitome of convenience and luxury in the City Centre Community! This remarkable and modern unit boasts a desirable layout with approximately 640sf + 104sf balcony, 1 bedroom plus a spacious den, and includes a parking spot and locker. Freshly painted with new LED lighting, the unit is bathed in natural light, showcasing stunning views from the 19th-floor balcony. With a remarkable 93 walk score, you'll find Square One Shopping Centre, Sheridan College, transit, and so much more within a short stroll, while Highway 403 is just minutes away. Embrace the array of amenities, including a full-size basketball/volleyball court, gym, cardio room, theatre, and media lounge. The podium rooftop oasis features BBQ areas, plenty of seating, a fireplace and gardening plots, providing the perfect setting for relaxation and entertaining. Don't miss out on the opportunity to call this exceptional place home! Floor plan attached as photo.

**** EXTRAS **** Maintenance Fees Include: Heat, Water, A/C, Parking, Building Insurance and Common Elements. Hydro Is Metered Separatly. Unit comes with parking spot and locker. Mississauga City Centre Transit Terminal Short Walk Away. (id:54154)



\$599,000 - 1903 - 360 SQUARE ONE DRIVE

MLS®, REALTOR®, and the associated logos are trademarks of The Canadian Real Estate Association

Data Provided by: Toronto Regional Real Estate Board

Last Modified: 09/07/2024 12:48:01 AM

Listing Office:RE/MAX ULTIMATE REALTY INC.