

\$499,000 - 104 - 4205 SHIPP DR DRIVE

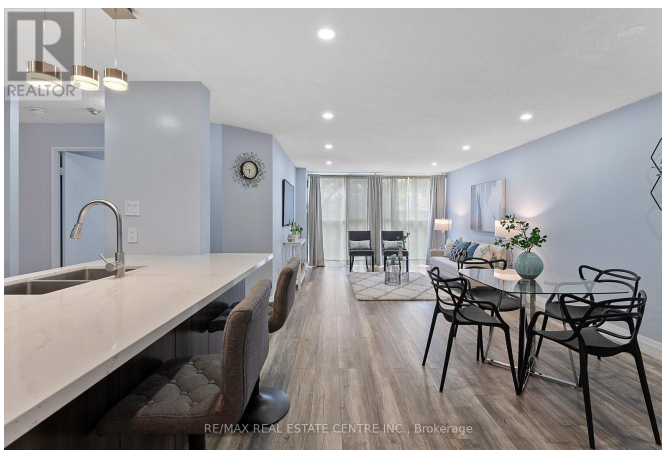
Listing ID: W8477526

\$499,000

2 Bedrooms, 2 Bathrooms Single Family

104 - 4205 SHIPP DR DRIVE, Mississauga,
Ontario, L4Z2Y9

Completely Renovated! Just Move-In And
Enjoy Bright & Large 1000+ Square Foot,
Open Concept, Ground Floor Condo! Great
Open Concept Layout With 2 Large
Bedrooms & 2 Full Baths! Plenty Of
Natural Lights Throughout Floor To Ceiling
Windows! All Utilities Included! Highly
Desired Area, Walk To Square One,
Celebration Square & Transportation,
Access To 403 & 401. **** EXTRAS ****
Stainless Steel Appliances (Fridge, Stove,
B/I Dishwasher), Washer, Dryer, 1 Parking
Space, All Utilities! Inclusions: (id:54154)



MLS®, REALTOR®, and the associated logos are trademarks of The Canadian Real Estate Association

Data Provided by: Toronto Regional Real Estate Board

Last Modified: 16/07/2024 05:35:46 PM

Listing Office: RE/MAX REAL ESTATE CENTRE INC.