

# \$3000.00 / Monthly - 1411 - 966 INVERHOUSE DRIVE

## Listing ID: W8469356

**\$3000.00 / Monthly**

3 Bedrooms, 2 Bathrooms Single Family

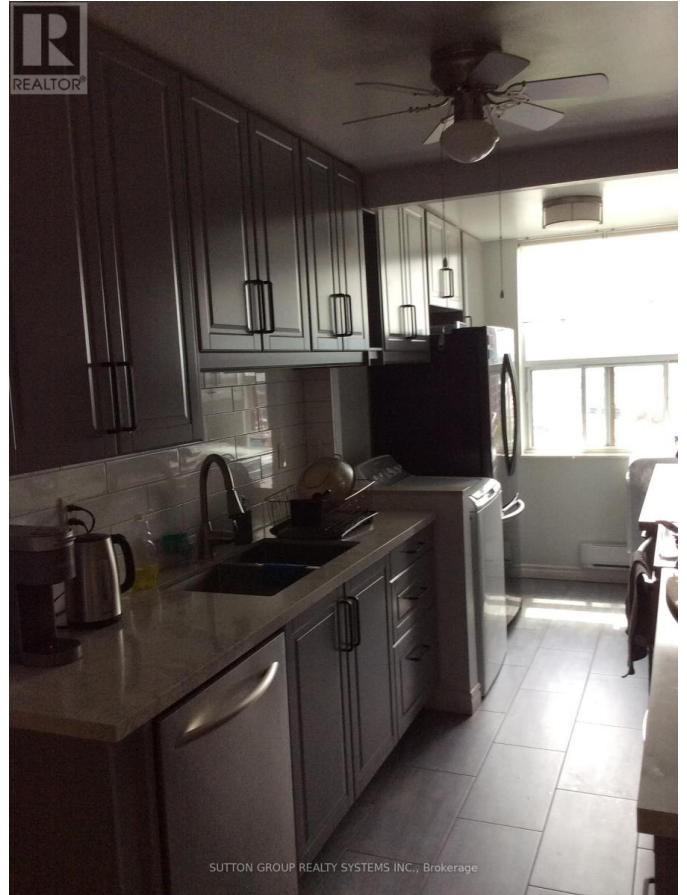
1411 - 966 INVERHOUSE DRIVE,  
Mississauga, Ontario, L5J4B6

Bright And Spacious Corner Unit! This 3 Bedroom 2 Bathroom Unit Is Located In Desirable Clarkson Village. Large In-Suite Locker And Laundry For Your Convenience. Very Quiet Neighbourhood. Building Surrounded By Well-Kept And Serene Landscaping. Only Minutes Away From The Lake, Clarkson Go And Much More! Quick Access To Qew And Hwy 403. Close To Great Schools, Shopping, Transit, Parks, Hospital And Lake Ontario. Internet And Cable Tv Included In Rent! \*\*\*\* EXTRAS \*\*\*\* S/S Fridge, Stove &, Dishwasher. Washer And Dryer. Amenities Include A Beautiful Outdoor Pool, Tennis Court, Games Room, Gym & Party Room. Many Bike/Walking Paths To Enjoy! Port Credit Only A Few Mins Away! (id:54154)



# \$3000.00 / Monthly - 1411 - 966 INVERHOUSE DRIVE

---



MLS®, REALTOR®, and the associated logos are trademarks of The Canadian Real Estate Association  
Data Provided by: Toronto Regional Real Estate Board  
Last Modified: 15/07/2024 03:36:59 PM  
Listing Office:SUTTON GROUP REALTY SYSTEMS INC.