

\$2550.00 / Monthly - 518 - 21 PARK STREET E

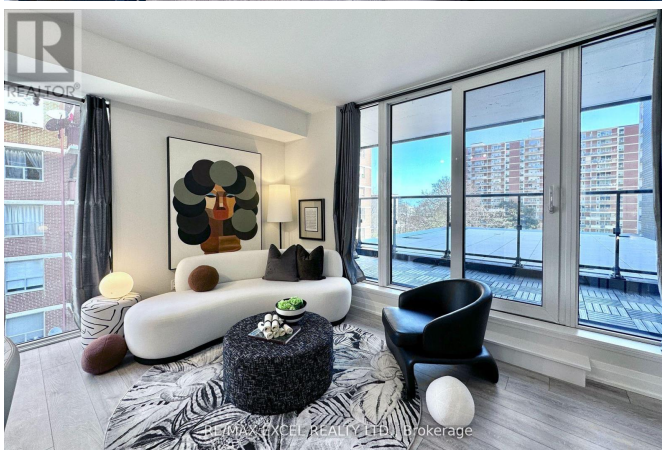
Listing ID: W8450346

\$2550.00 / Monthly

1 Bedrooms, 1 Bathrooms Single Family

518 - 21 PARK STREET E, Mississauga,
Ontario, L5G1L7

In The Heart Of Port Credit, 2 Yr New Tanu
Luxury Condo Built By Edenshaw. 1 Extra
Large Size Bdrm Condo Corner Unit
Featuring 270 Degree: South, East & North
Exposure W/ 728 Sqft + 108Sqft Terrace.
Contemporary Open Concept Kitchen W/
Integrated Fridge, Dishwasher, Undermount
Sink, Quartz Countertop With An Upgraded
Large Centre Island, Ample of Pantry
Cabinet Space. 2 Mins Walk To Port Credit
Go Station, Waterfront, Parks, Schools,
Restaurants, Shops And More. Unit Has
Smart Home Technology, Keyless Entry,
Building Amenities Include: 24/7
Concierge, Gym/Yoga Rm, Theatre,
Billiards/Games Rm, Party Room, Outdoor
Patio With Barbeque Area, Pet Spa, Car
Wash Service, Guest Suite & Visitor
Parking **** EXTRAS **** Integrated B/I
Fridge & Dishwasher, B/I Glass Cooktop,
Stainless Steel B/I Stove, Stainless Steel B/I
Microwave Hood Fan, Washer And Dryer, 2
Lockers (Side-by-side), Smart Home
Technology Keypad & Keyless Entry
(id:54154)



MLS®, REALTOR®, and the associated logos are trademarks of The Canadian Real Estate Association

Data Provided by: Toronto Regional Real Estate Board

Last Modified: 09/07/2024 12:35:14 AM

Listing Office:RE/MAX EXCEL REALTY LTD.