

\$3000.00 / Monthly - 1406 - 220 MISSINNIHE WAY

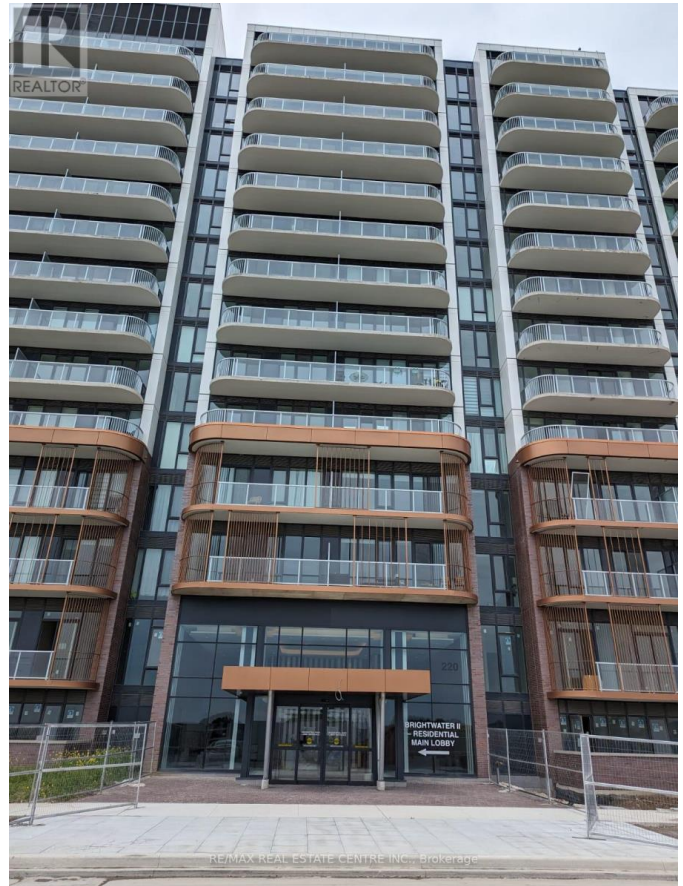
Listing ID: W8445542

\$3000.00 / Monthly

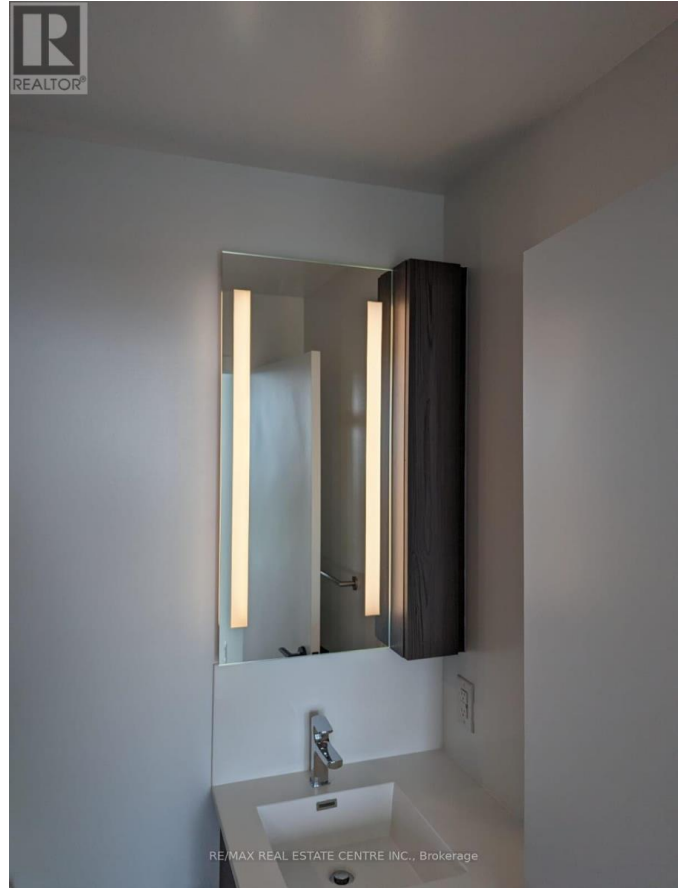
3 Bedrooms, 2 Bathrooms Single Family

1406 - 220 MISSINNIHE WAY,
Mississauga, Ontario, L5H0A9

Waterfront District Brightwater 72-acre master planned resort-like community. This boutique building promises an easy access to the Lake Ontario and offers direct access to 20,000 SF of retail streetscape alongside convenient transit connections (MiWay & Port Credit GO), serene waterfront parks and an array of restaurants. This never-lived in unit features a generous and functional den, versatile kitchen with an island and keyless access to enhance your living experience. The unit comes with 1 parking space & 1 locker. Building offers free public wifi & complimentary shuttle to Port Credit Go. **** EXTRAS **** Amenities are set to include a 24-h concierge, parcel storage, entertainment lounge/party room, gym, yoga/meditation space, dining area with BBQ, rooftop terrace, co-working space, pet spa, bike storage. (id:54154)



\$3000.00 / Monthly - 1406 - 220 MISSINNIHE WAY



MLS®, REALTOR®, and the associated logos are trademarks of The Canadian Real Estate Association

Data Provided by: Toronto Regional Real Estate Board

Last Modified: 22/07/2024 01:38:35 PM

Listing Office:RE/MAX REAL ESTATE CENTRE INC.