

\$2700.00 / Monthly - 2706 - 310 BURNHAMTHORPE ROAD

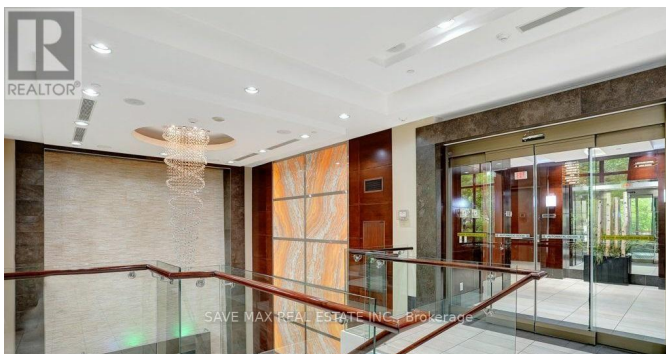
Listing ID: W8441896

\$2700.00 / Monthly

2 Bedrooms, 1 Bathrooms Single Family

2706 - 310 BURNHAMTHORPE ROAD
W, Mississauga, Ontario, L5B4P9

Your Search End Here!!! Beautiful 2 Bedroom Condo, Corner Unit On Higher Floor With Spectacular Panoramic Lake View. Prime Location! Located In The Heart Of City Centre With Easy Access To Hwy 403/401/Qew. Near Sheridan College. Walking Distance To Living Arts Centre, Ymca, Library, City Centre, Restaurants And Transit. Gorgeous View With A Lot Of Sunshine. Great Layout, Features 24Hr Concierge, Indoor Pool, Gym, Hot Tub, Bbq Area And Much More! **** EXTRAS **** Hydro is Extra. (id:54154)



MLS®, REALTOR®, and the associated logos are trademarks of The Canadian Real Estate Association

Data Provided by: Toronto Regional Real Estate Board

Last Modified: 09/07/2024 12:32:23 AM

Listing Office:SAVE MAX REAL ESTATE INC.