

\$3000.00 / Monthly - 1401 - 220 MISSINNIHE WAY

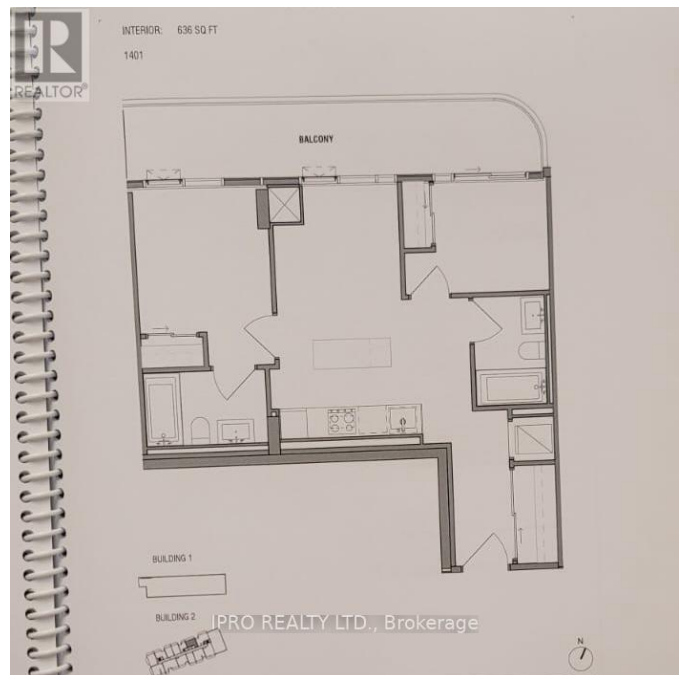
Listing ID: W8434078

\$3000.00 / Monthly

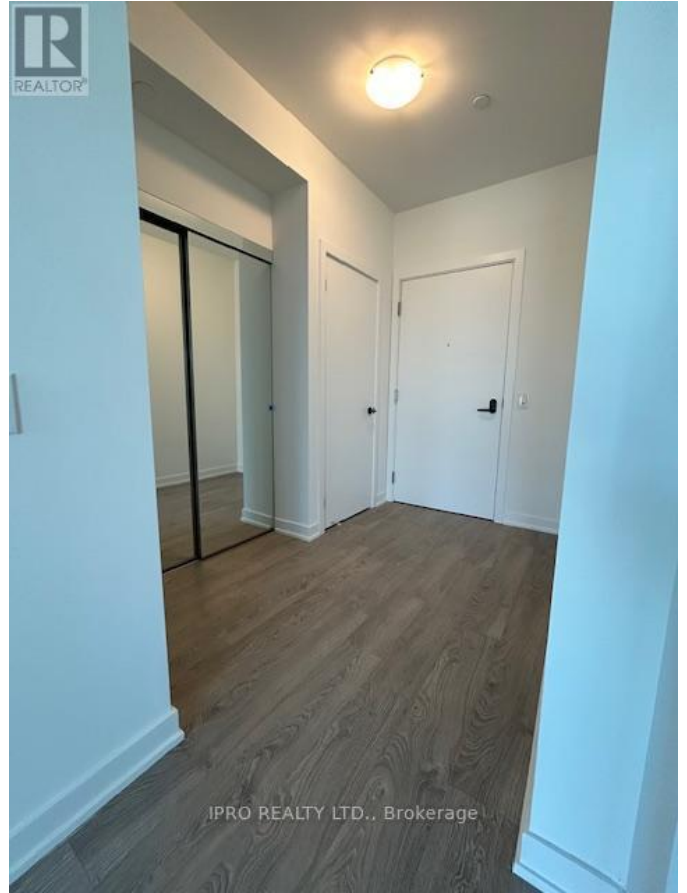
2 Bedrooms, 2 Bathrooms Single Family

1401 - 220 MISSINNIHE WAY,
Mississauga, Ontario, L5H0A9

Discover luxury living in this stunning 2 bedroom plus den condo, offering 2 full washrooms and a generous balcony. Set in a charming and secure neighbourhood, near top-rated schools, this condo is defined by its premium finishes and prime location. This unit is situated on the top floor with bright and unobstructed stunning views on greenery and Square One's skyline. The interior is adorned with laminate flooring, a spacious kitchen and a bright, open-plan living and dining area. Building amenities such as fitness centre, party room, ground floor retail convenience and parks of Port Credit with a free community shuttle to Port Credit GO station. A must see property, complete with built-in fridge, stove, dishwasher, microwave, washer and dryer, internet, one parking and one locker included. (id:54154)



\$3000.00 / Monthly - 1401 - 220 MISSINNIHE WAY



MLS®, REALTOR®, and the associated logos are trademarks of The Canadian Real Estate Association
Data Provided by: Toronto Regional Real Estate Board
Last Modified: 09/07/2024 12:29:11 AM
Listing Office:IPRO REALTY LTD.