

\$1,050,000 - 1501 - 21 PARK STREET E

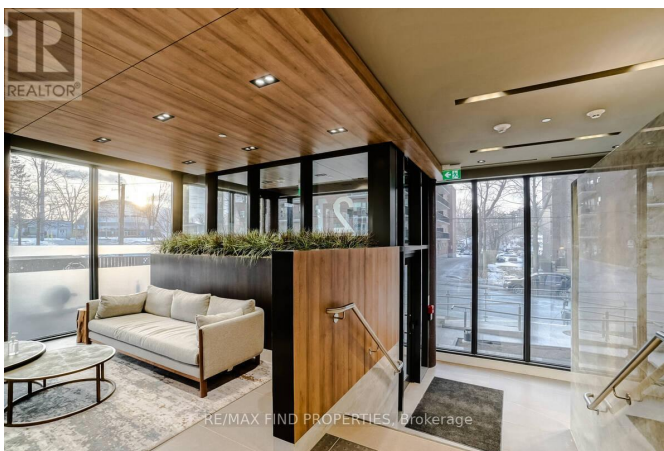
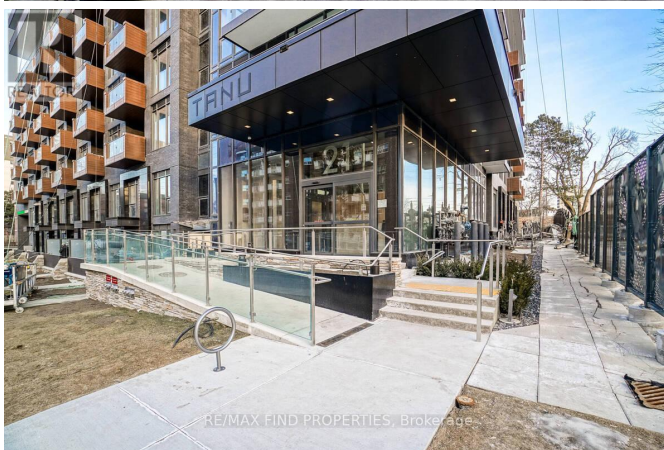
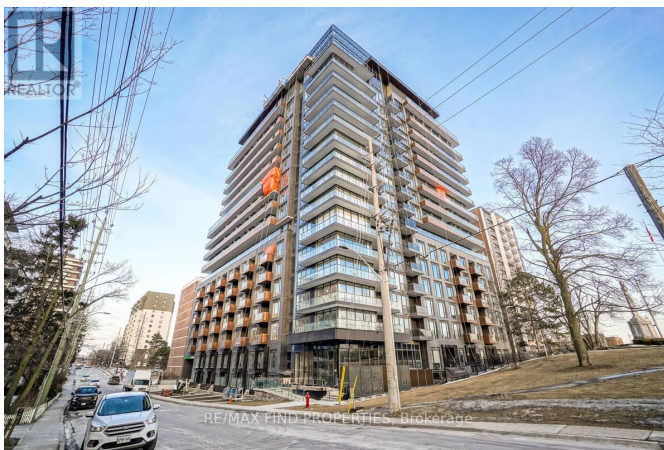
Listing ID: W8428224

\$1,050,000

2 Bedrooms, 2 Bathrooms Single Family

1501 - 21 PARK STREET E, Mississauga,
Ontario, L5G0C2

Designed By Ibi Group, Tanu Fuses Natural Materials-Contemporary Architecture To Create A Warm, Sophisticated Condominium Residence. Steps To Waterfront Parks, Trails, Restaurants, Retail, & Port Credit Go Station. 2 Bdrm & 2 Bath Open Living Area Makes Great Space For Entertaining. Spacious L-Shaped Balcony Minutes To: Lake, Parks, Go, Boutiques, Cafes & More. Enjoy Sunsets And More In This Th With Smart Home Technology. **** EXTRAS **** 2 BIKE LOCKERS LEVEL A # 76 & 77 (id:54154)



MLS®, REALTOR®, and the associated logos are trademarks of The Canadian Real Estate Association

Data Provided by: Toronto Regional Real Estate Board

Last Modified: 15/07/2024 07:32:08 PM

Listing Office: RE/MAX FIND PROPERTIES