

\$2549.00 / Monthly - 305 - 8 NAHANI WAY

Listing ID: W8425246

\$2549.00 / Monthly

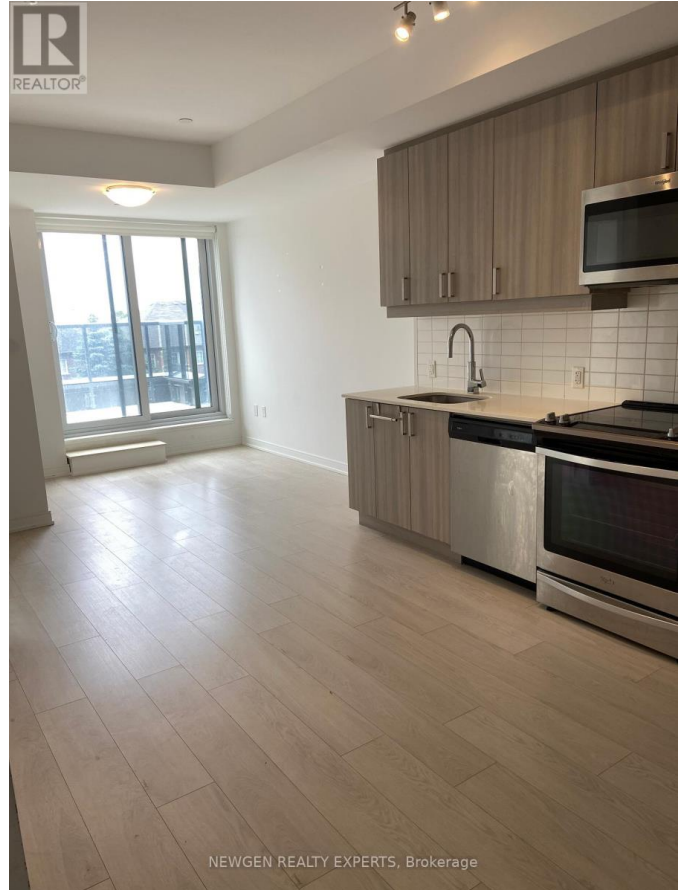
2 Bedrooms, 2 Bathrooms Single Family

305 - 8 NAHANI WAY, Mississauga,
Ontario, L4Z4J8

1 Bedroom Plus Den, 2 Washroom Unit At Mississauga Sq By Plazacorp. Beautiful View From The Balcony. Primary Bedroom W/Ensuite Bath & Large Closet. Modern Design Kitchen + S/S Appliances. Conveniently Located At Heart Of Mississauga. Walking Distance To Grocery, Restaurants, Public Transit. Mins To Square One, Library, Community Centre, Sheridan College, Miway & Go Bus Terminal And Hwy 403/401/Qew. Condo will be professionally cleaned and Paint touch up's will be done before closing. **** EXTRAS **** Microwave; S/S Appl: Fridge/Stove/Dishwasher, Over-The-Range Standard Size White Front Loading Washer & Dryer, Laminate Flooring, Parking & Locker. Looking For +Aaa Tenants. Non Smokers. (id:54154)



\$2549.00 / Monthly - 305 - 8 NAHANI WAY



MLS®, REALTOR®, and the associated logos are trademarks of The Canadian Real Estate Association

Data Provided by: Toronto Regional Real Estate Board

Last Modified: 29/07/2024 01:35:06 PM

Listing Office:NEWGEN REALTY EXPERTS