

\$579,990 - 16 - 3115 BOXFORD CRESCENT

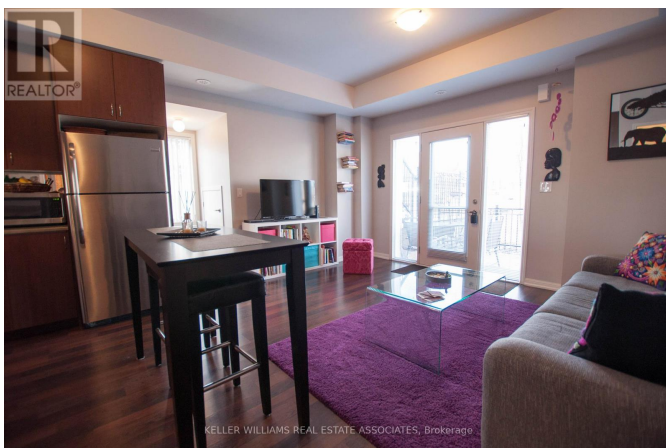
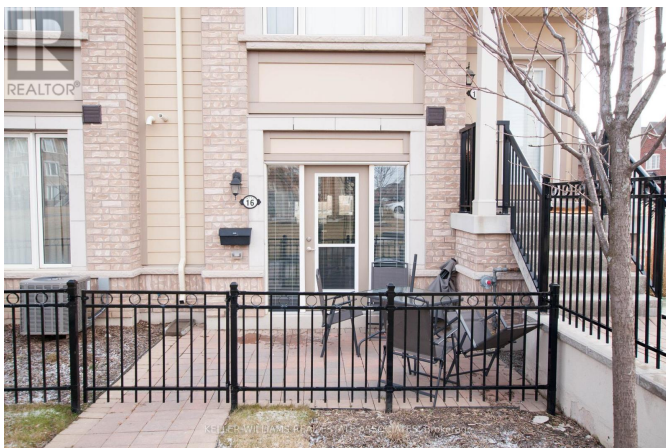
Listing ID: W8387154

\$579,990

1 Bedrooms, 1 Bathrooms Single Family

16 - 3115 BOXFORD CRESCENT,
Mississauga, Ontario, L5M0X1

Bright & Spacious one bedroom unit with garage parking & tonnes of natural light! Located in the highly sought after Churchill Meadows area, located in the heart of the community with easy access to the complex playground, garden & gazebo. This unit boasts gorgeous laminate flooring, stainless steel appliances, an open concept living space, ensuite laundry and a large bedroom with walk-in closet. Easy access to the 403, Erin Mills Town Centre, Credit Valley Hospital & amazing restaurants. Come before its too late! (id:54154)



MLS®, REALTOR®, and the associated logos are trademarks of The Canadian Real Estate Association

Data Provided by: Toronto Regional Real Estate Board

Last Modified: 09/07/2024 12:19:06 AM

Listing Office: KELLER WILLIAMS REAL ESTATE ASSOCIATES