

\$2900.00 / Monthly - 3002 - 385 PRINCE OF WALES DRIVE

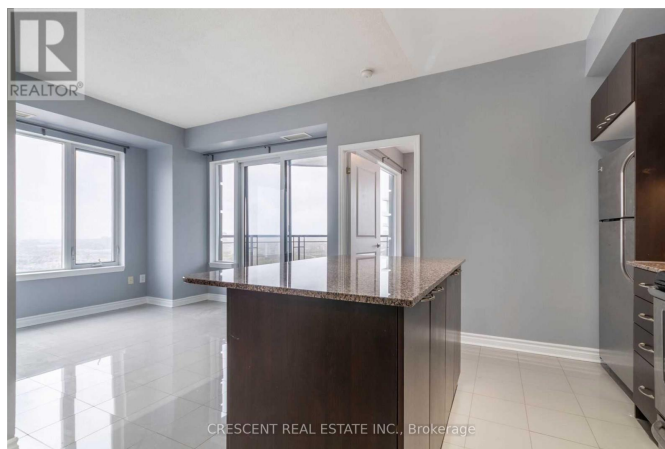
Listing ID: W8380630

\$2900.00 / Monthly

2 Bedrooms, 1 Bathrooms Single Family

3002 - 385 PRINCE OF WALES DRIVE,
Mississauga, Ontario, L5B0C6

Modern 2 Bed, 1 Bath Corner Unit. Parking
And Locker Included. Flexible Lease Terms
Available. Generous Bedrooms With Large
Windows And Closets. Lots Of Natural
Light, Enjoy The Beautiful Sunsets.
Unparalleled Views Of The Toronto And
Mississauga Skyline From Your Oversized
Balcony. Short Walk To Square One,
Grocery Stores, Sheridan, Ymca, Miway/Go
Terminals, Celebration Square. 403, 403,
Qew Within Minutes. (id:54154)



MLS®, REALTOR®, and the associated logos are trademarks of The Canadian Real Estate Association

Data Provided by: Toronto Regional Real Estate Board

Last Modified: 09/07/2024 12:18:26 AM

Listing Office: CRESCENT REAL ESTATE INC.