

# \$599,990 - 211 - 4185 SHIPP DRIVE

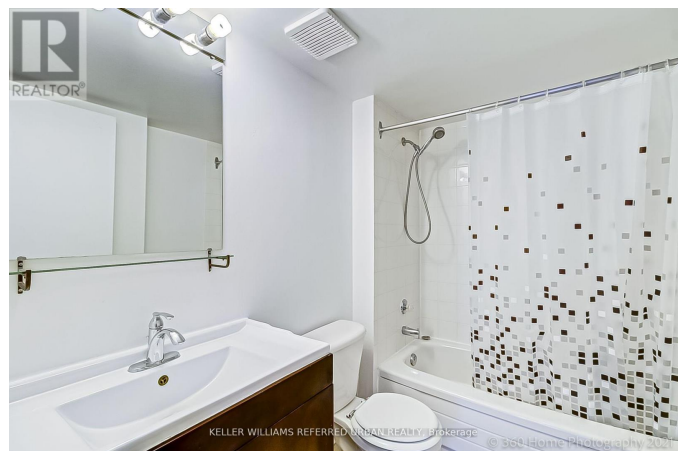
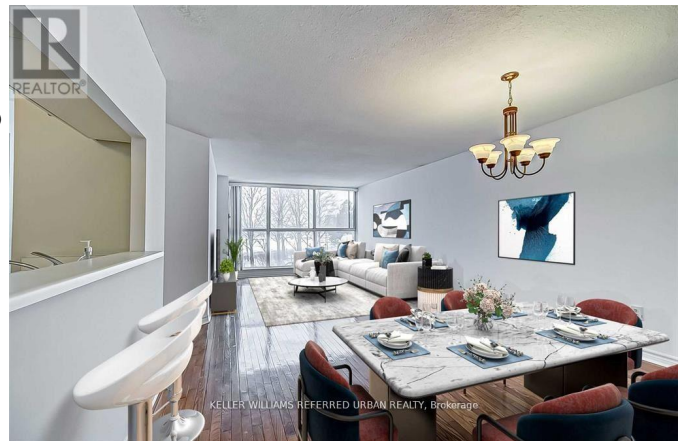
## Listing ID: W8352748

**\$599,990**

2 Bedrooms, 2 Bathrooms Single Family

211 - 4185 SHIPP DRIVE, Mississauga,  
Ontario, L4Z2Y8

Great opportunity to live in City Centre, in a Vibrant Square One neighbourhood, surrounded by an abundance of shopping, dining & entertainment. Walking distance to Square One, minutes to Regional Transit Bus and GO Station, close to highways 403, QEW, 401 and 407. Floor-to-ceiling windows for lots of natural lights. Great condo amenities, just like a Hotel. 2nd-floor suite - No Need For Elevators, Includes Heating, hydro, water, Central Air Condition, Building Insurance, Parking. Virtually Staged. \*\*\*\* EXTRAS \*\*\*\*  
Luxury 2 bedrooms + 2 Full 4-piece Washrooms, Parking #346, ensuite, laundry. Visitor Parking, 24-hour security, laminated floors throughout. (id:54154)



MLS®, REALTOR®, and the associated logos are trademarks of The Canadian Real Estate Association

Data Provided by: Toronto Regional Real Estate Board

Last Modified: 09/07/2024 12:14:53 AM

Listing Office: KELLER WILLIAMS REFERRED URBAN REALTY