

\$777,000 - 2712 - 4055 PARKSIDE VILLAGE DRIVE

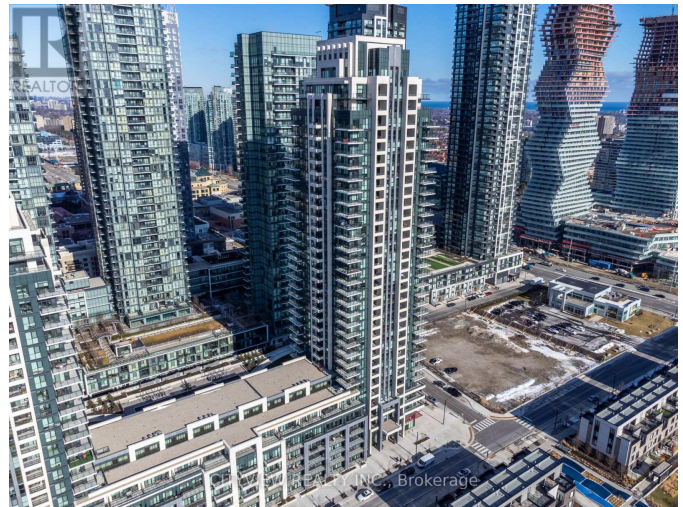
Listing ID: W8345960

\$777,000

3 Bedrooms, 2 Bathrooms Single Family

2712 - 4055 PARKSIDE VILLAGE
DRIVE, Mississauga, Ontario, L5B0K8

Stunning Corner Unit in The Heart of Mississauga-Square One in Much Sought After Building with Clear Views from the 27th Floor. Unit Has Floor to Ceiling Windows with Tons of Natural Light, Open Concept Kitchen with Granite Counters, Modern Backsplash, Stainless Steel Appliances. Open Concept Living/ Dining Room W/ Laminate Flooring Throughout Walking Out to Private Balcony. Large Master With 4Pc. Close To 401, 403, Square One Shopping Mall, Sheridan College, Celebration Square, Public Transit, Ymca, Central Library. **** EXTRAS **** Amenities Include: Exercise Room, Yoga Studio, Games Room, Gym, Party/Meeting Room, Visitor Parking. (id:54154)



MLS®, REALTOR®, and the associated logos are trademarks of The Canadian Real Estate Association

Data Provided by: Toronto Regional Real Estate Board

Last Modified: 09/07/2024 12:13:58 AM

Listing Office: CITYVIEW REALTY INC.