

\$2700.00 / Monthly - 3006 - 3525 KARIYA DRIVE

Listing ID: W8342536

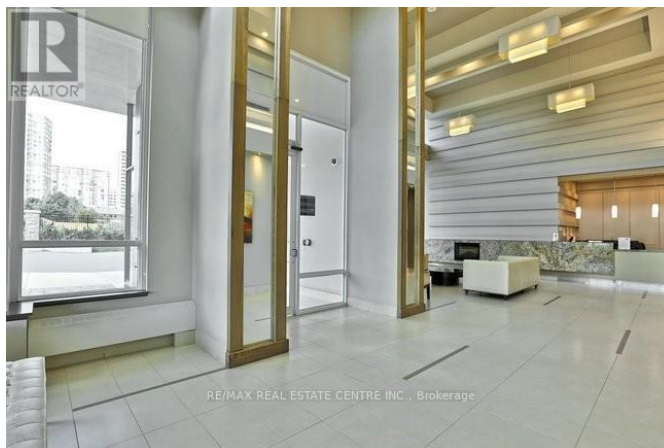
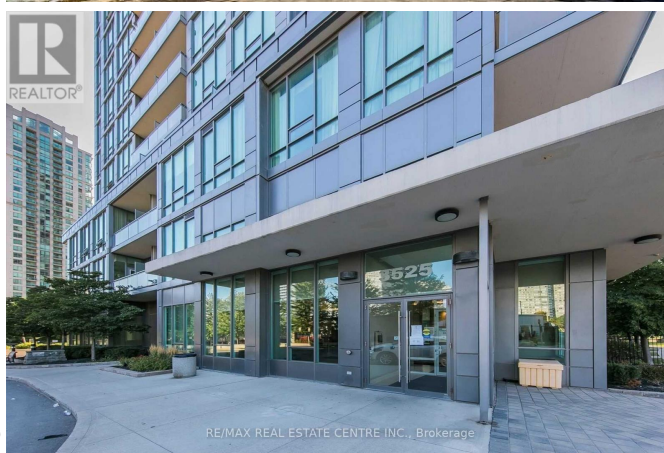
\$2700.00 / Monthly

2 Bedrooms, 1 Bathrooms Single Family

3006 - 3525 KARIYA DRIVE,
Mississauga, Ontario, L5B0C2

A bright 705 sq. ft. corner unit with balcony and 9 feet floor to ceiling windows offering a stunning panoramic view stretching from the lake in south to Square One shopping centre west. An open concept design with engineered hardwood in the living, dining and den area; and broadloom in the bedroom; two layers of curtains; s/s kitchen appliances and a granite countertop; dryer & brand new washer. A locker and a parking spot, located at the convenient P2 level close to garage entrance. Walking distance to Square One, celebration sq, and Sheridan college. Located between the two transit hubs of Square One & Cooksville; Close to 403 & QEW; and steps from an upcoming LRT station. Excellent Amenities, 24 Hr Secured Building, Games Room, Gym, Indoor Pool, Hot Tub, Sauna, Media Room, Party/Meeting Room, Guest Suites, Rooftop Bbq Patio. Finally, this suite comes with guaranteed sunset views of exceptional beauty. **** EXTRAS **** S/S

Appliances : Fridge, Stove, B/I Microwave & Dishwasher, Dryer, New Washer, All ELF's & Window Coverings. One Parking & Locker Included. Tenant to Pay Hydro (id:54154)



MLS®, REALTOR®, and the associated logos are trademarks of The Canadian Real Estate Association

Data Provided by: Toronto Regional Real Estate Board

Last Modified: 21/05/2024 05:35:07 PM

\$2700.00 / Monthly - 3006 - 3525 KARIYA DRIVE

Listing Office:RE/MAX REAL ESTATE CENTRE INC.