

\$3600.00 / Monthly - 904 - 220 MISSINNIHE WAY

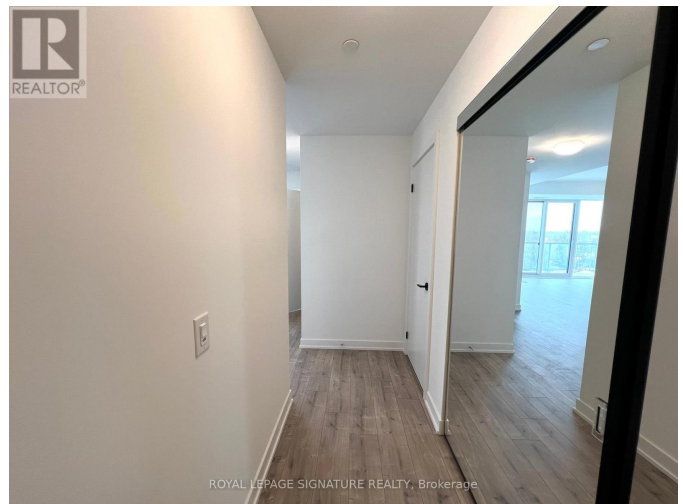
Listing ID: W8324572

\$3600.00 / Monthly

2 Bedrooms, 2 Bathrooms Single Family

904 - 220 MISSINNIHE WAY,
Mississauga, Ontario, L5H0A9

Luxury Living At The Brand New
Brightwater Development In Port Credit!
This 832 Sq Ft Unit Boosts Countless
Upgrades, Has 2 Separate Balconies For
Entertaining And Floor To Ceiling
Windows That Allow For Constant Natural
Light. Wake Up Each Morning To Stunning
Views Of The Lake! This Smart Home Unit
Comes With 1 Parking, 1 Locker, Free
Internet And Free Shuttle Bus Access To
Port Credit GO Station. Steps From Farm
Boy, LCBO, Loblaws, Port Credit GO,
QEW & More! **** EXTRAS ****
Washer & Dryer, Fridge, Stove, All
Electrical Fixtures. Over \$20K Spent On
Upgrades Within Unit. (id:54154)



MLS®, REALTOR®, and the associated logos are trademarks of The Canadian Real Estate Association

Data Provided by: Toronto Regional Real Estate Board

Last Modified: 14/05/2024 12:48:29 AM

Listing Office:ROYAL LEPAGE SIGNATURE REALTY