

# \$589,900 - 2607 - 1 ELM DRIVE W

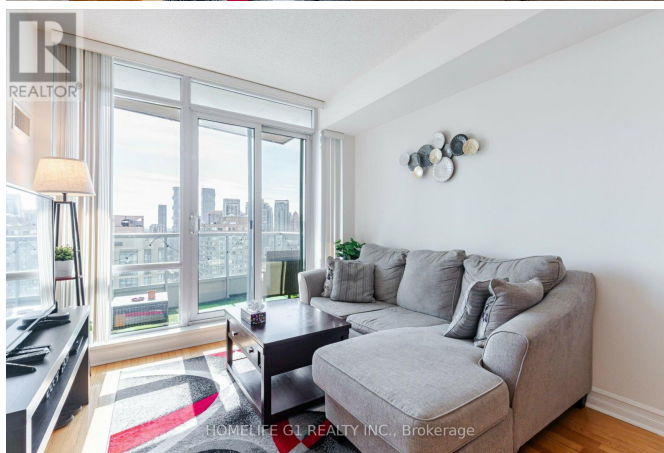
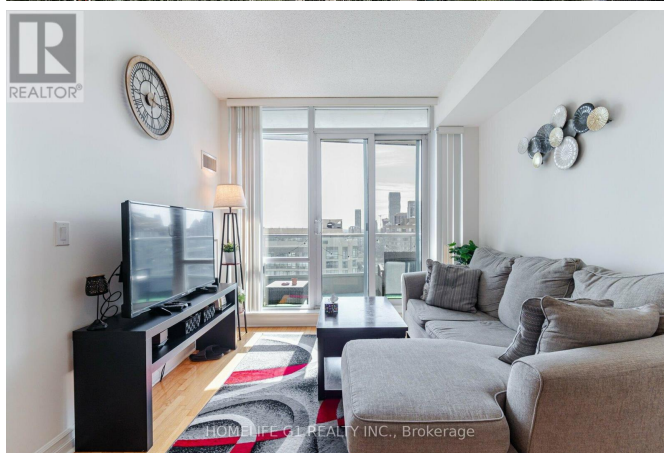
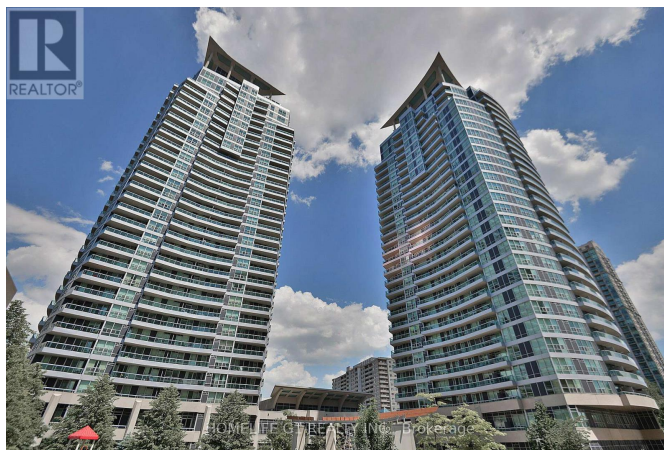
## Listing ID: W8320964

**\$589,900**

2 Bedrooms, 1 Bathrooms Single Family

2607 - 1 ELM DRIVE W, Mississauga,  
Ontario, L5B4M1

Spectacular 1 Bedroom + 1 Den Condo Built By Award Winning Builder Daniels. Located Walking Distance To Square One. Spacious Den Comes With Closet and Plenty Of Space For A Queen Bed - Den Currently Being Used As 2nd Bedroom. One Of The Few Suites In This Building With 9 ft Ceilings. Spacious Primary Bedroom Contains Large Workspace/Solarium - Great For Working From Home. Chef's Kitchen Includes Granite Counters, Stainless Steel Appliances & Abundance of Cupboard Space. Enjoy Family Time/Entertaining In Large Living Room and Dining Area. Large Open Balcony With Great View. Ensuite Laundry. Lots of Natural Light In Entire Suite. Do Not Miss. \*\*\*\* EXTRAS \*\*\*\* 1 Underground Parking Space and 1 Locker Included. Amenities Include: Indoor Pool, Sauna, Gym, Exercise Rm, Party & Meeting Rm, Indoor/Outdoor Hot Tub, Theatre, Billiards, Table Tennis. (id:54154)



MLS®, REALTOR®, and the associated logos are trademarks of The Canadian Real Estate Association

Data Provided by: Toronto Regional Real Estate Board

Last Modified: 14/05/2024 12:47:04 AM

Listing Office:HOMELIFE G1 REALTY INC.