

\$2900.00 / Monthly - 2111 - 35 TRAILWOOD DRIVE E

Listing ID: W8319614

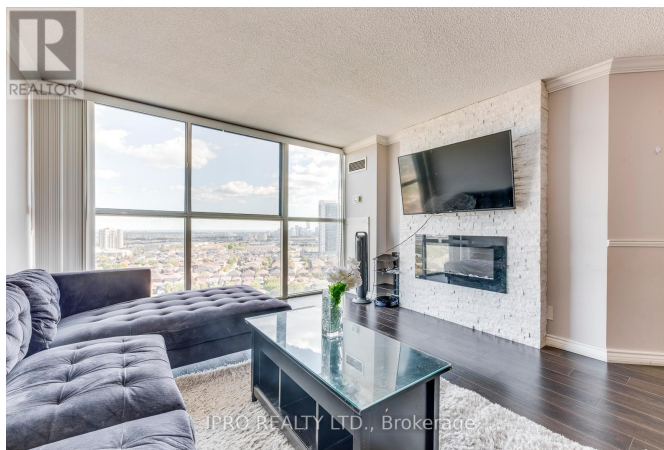
\$2900.00 / Monthly

2 Bedrooms, 2 Bathrooms Single Family

2111 - 35 TRAILWOOD DRIVE E,
Mississauga, Ontario, L4Z3L6

Gorgeous 2 Bed + 2 Full Bath Condo With Fantastic Unobstructed South East View Of The Lake & The City. This Upgraded Suite Feat. An Open Concept Layout With Laminate Floors & Floor To Ceiling Windows! Entertainers Kitchen With S/S Appliances, Mosaic Backsplash & A Breakfast Bar. Brand New Washer & Dryer. Ikea Closet In Bedrooms. Close To Schools & Hwy 403,401 & 407 And Square One Shopping Centre. Close to future LRT
>>rent Includes All Utilities<< ****

EXTRAS **** Includes Fitness Room, Indoor Pool, Sauna, Games & Party Room. Large Storage Inside The Unit. S/S Fridge, S/S Stove(2023), S/S B/I Dishwasher(2023), S/S Microwave(2023) & Washer & Dryer(2021). (id:54154)



MLS®, REALTOR®, and the associated logos are trademarks of The Canadian Real Estate Association

Data Provided by: Toronto Regional Real Estate Board

Last Modified: 14/05/2024 12:46:28 AM

Listing Office:IPRO REALTY LTD.