

\$898,800 - 518 - 657 CRICKLEWOOD DRIVE

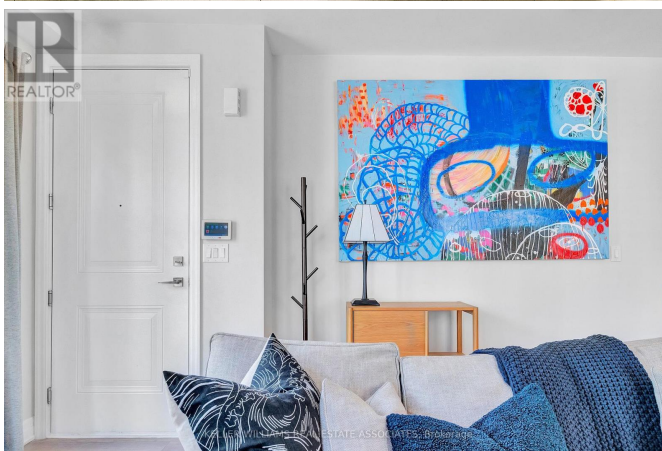
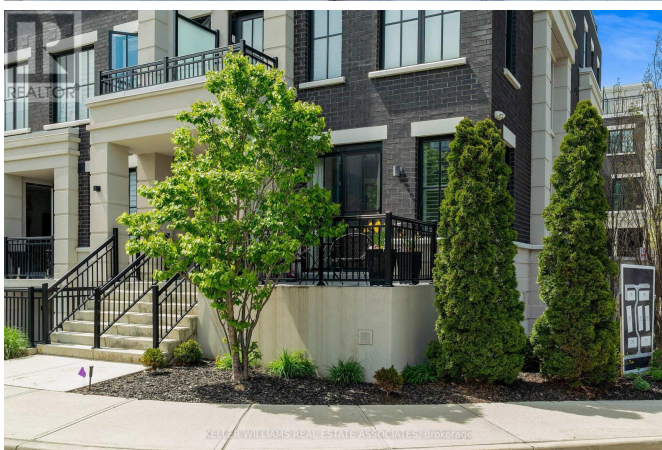
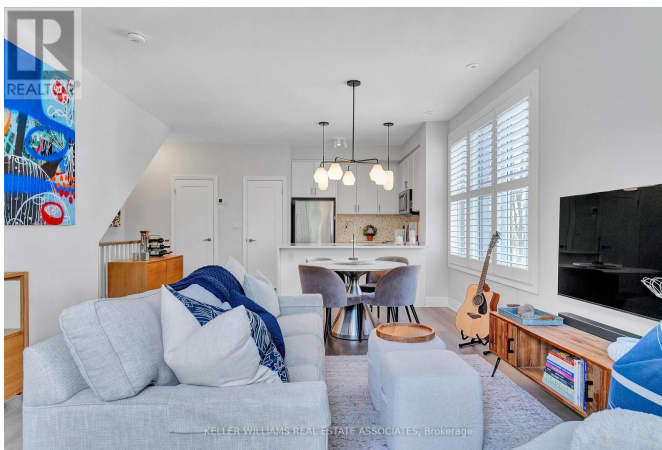
Listing ID: W8317406

\$898,800

2 Bedrooms, 3 Bathrooms Single Family

518 - 657 CRICKLEWOOD DRIVE,
Mississauga, Ontario, L5G0B8

Two stories of Real Estate Heaven spread across 1,082 square feet + a corner unit! This townhome is in the coveted Mineola community and offers a unique floor plan within a peaceful pocket. It is a true gem, featuring two bedrooms (separate from living spaces), three bathrooms and 9-foot ceilings! Step into a bright, airy living space with large windows that flood the room with natural light. The dining room is open to the living room, creating a perfect space for entertaining. Step into the highly sought-after community of Mineola East! Embrace this exceptional locale's dynamic and sophisticated atmosphere, offering a seamless blend of luxury, convenience, and a heartwarming community spirit that welcomes you with open arms within minutes to the QEW and Port Credit GO station. **** EXTRAS **** All existing appliances (fridge, stove, dishwasher, upgraded washer/dryer, microwave), all shutters, & all light fixtures. **furnace, AC and hot water tank purchased/owned** (id:54154)



MLS®, REALTOR®, and the associated logos are trademarks of The Canadian Real Estate Association

Data Provided by: Toronto Regional Real Estate Board

Last Modified: 13/06/2024 03:35:02 PM

Listing Office: KELLER WILLIAMS REAL ESTATE ASSOCIATES