

\$799,900 - 113 - 55 ELM DRIVE

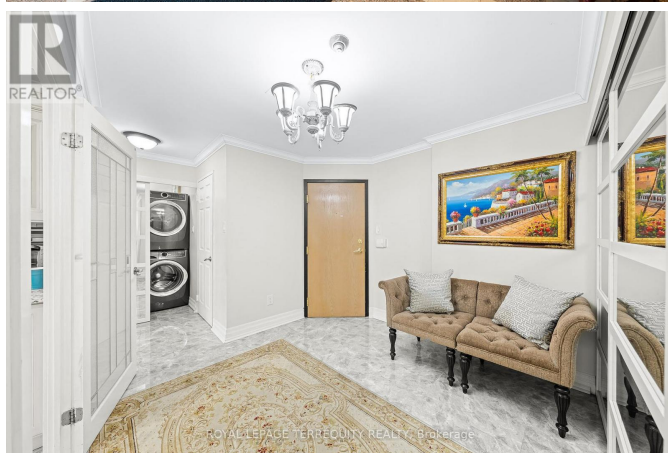
Listing ID: W8315508

\$799,900

3 Bedrooms, 2 Bathrooms Single Family

113 - 55 ELM DRIVE, Mississauga,
Ontario, L5B3Z3

Simply Amazing Corner suite with almost 1600 sq ft of luxurious living in the Central Mississauga. 3 Generously Sized Bedrooms (3rd room used to be solarium). Extensively Renovated In The last 5 Years! Hardwood Floors All Over; Granite Counter Top In Kitchen And Both Bathrooms; Pot Lights; Custom Drapes; Premium Appliances. Walk-In Closet In Master Bedroom. This beautiful suite has its own Huge Patio With Bbq Allowed! Prime Mississauga Location With Walking Distance To Public Transit, Major Shops, Schools, Parks! 5 Minutes To Square One Shopping Mall. 2 Parking Spots. (id:54154)



MLS®, REALTOR®, and the associated logos are trademarks of The Canadian Real Estate Association

Data Provided by: Toronto Regional Real Estate Board

Last Modified: 09/07/2024 12:10:05 AM

Listing Office:ROYAL LEPAGE TERREQUITY REALTY