

# \$499,999 - 1710 - 50 ELM DRIVE E

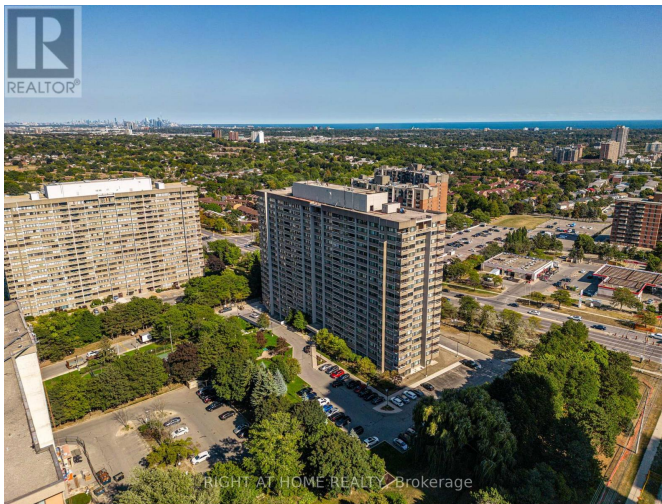
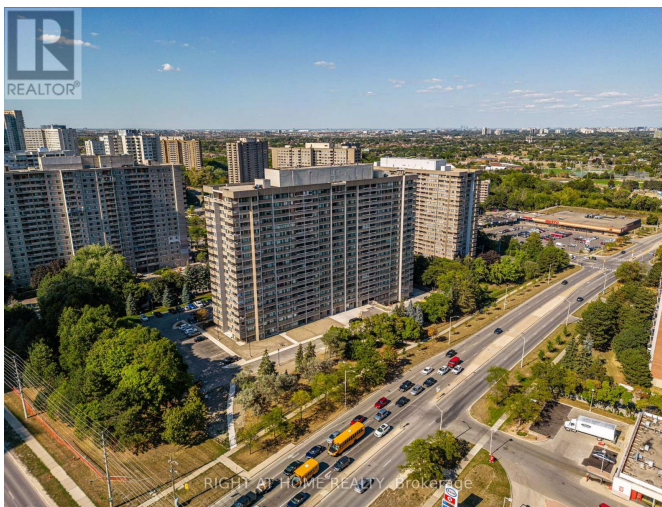
## Listing ID: W8297626

**\$499,999**

2 Bedrooms, 2 Bathrooms Single Family

1710 - 50 ELM DRIVE E, Mississauga,  
Ontario, L5A3X2

Searching for ample living space? Discover a rare find-nearly 1200 sq ft of living complemented by a spacious balcony, offering breathtaking sunset views. This home features an ensuite locker providing abundant storage options. They truly don't build them like this anymore. Come see why bigger is better and make this suite your new sanctuary. Ideally situated in the heart of Mississauga and steps away from Metro, Park, School, Restaurants, Starbucks, Square One Mall, Celebration Square and the future LRT, making access to downtown Toronto very easy. Don't Miss your chance to claim this rare find. \*\*\*\* EXTRAS \*\*\*\* Dishwasher, Washer/Dryer, Range Hood, Fridge, Stove, All ELF's (id:54154)



MLS®, REALTOR®, and the associated logos are trademarks of The Canadian Real Estate Association

Data Provided by: Toronto Regional Real Estate Board

Last Modified: 22/07/2024 08:11:00 AM

Listing Office:RIGHT AT HOME REALTY