

\$3250.00 / Monthly - #PH2205 -4655 METCALFE AVE

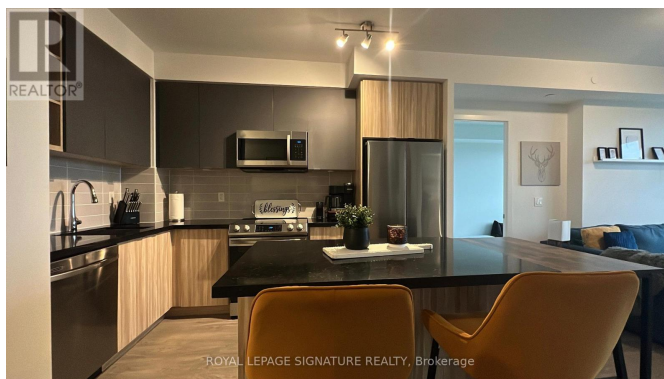
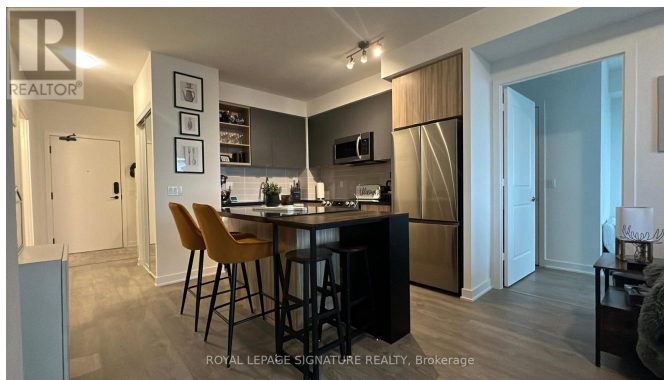
Listing ID: W8272492

\$3250.00 / Monthly

3 Bedrooms, 2 Bathrooms Single Family

#PH2205 -4655 METCALFE AVE,
Mississauga, Ontario, L5M0Z7

Absolutely Spectacular Penthouse 2+1 Bed
2 Bath Unit in Highly Demanded Erin
Square By Pemberton Group! This
Gorgeous Unit Boasts Modern Finishes, a
Large Open-Concept Kitchen w/Island and
Stainless Steel Appliances, Large
Bedrooms, Great Bathrooms, and a
Fantastic East Facing View. Steps to Erin
Mills Town Centre, Credit Valley Hospital,
All Amenities, and Quick Access to the
Highway. Parking and Locker Included. It's
More Than Just A Condo It's A Lifestyle.
(id:54154)



MLS®, REALTOR®, and the associated logos are trademarks of The Canadian Real Estate Association

Data Provided by: Toronto Regional Real Estate Board

Last Modified: 07/05/2024 10:46:54 AM

Listing Office:ROYAL LEPAGE SIGNATURE REALTY