

\$2500.00 / Monthly - 1010 - 220 MISSINNIHE WAY

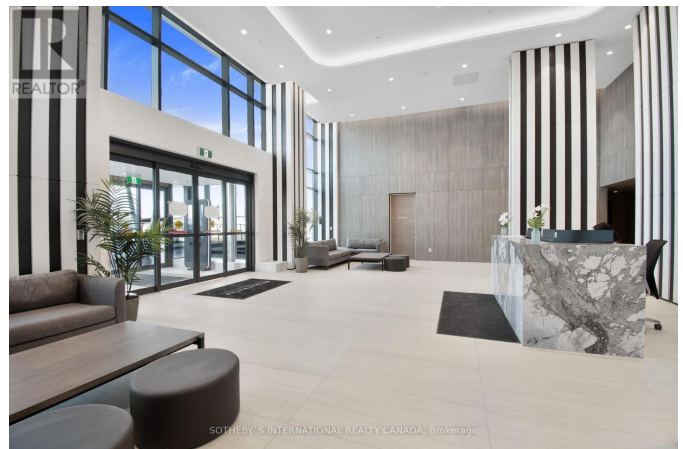
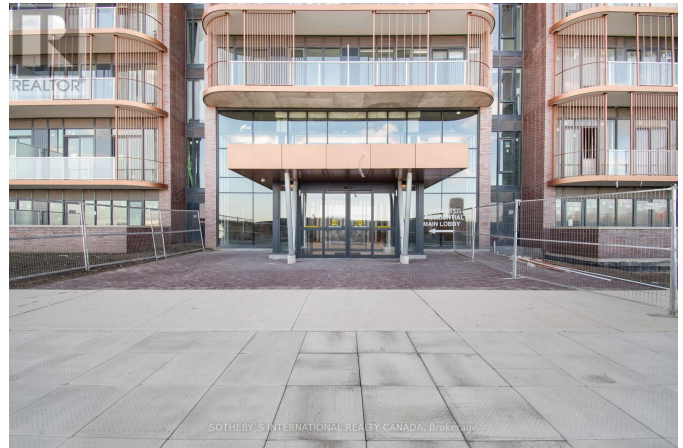
Listing ID: W8255006

\$2500.00 / Monthly

2 Bedrooms, 1 BathroomsSingle Family

1010 - 220 MISSINNIHE WAY,
Mississauga, Ontario, L5H1G5

Experience luxury living in the heart of Mississauga at the New Bright Water Community. Bright & Modern 1 bedroom plus Den, located on the 10th floor. This unit features an open-style kitchen top-tier appliances and a beautiful 5 foot island. Private balcony with lakeviews. With its modern features and smart design, this condominium provides a polished urban living experience. Frequent shuttle to Port Credit GO station right from the building. No need to rely on public transport while commuting everyday. Farm Boy, LCBO, Eatly, BMO, Dentist, Family Doctor are coming soon! Just steps away. Don't miss this opportunity! Close to the best parks and restaurants. (id:54154)



MLS®, REALTOR®, and the associated logos are trademarks of The Canadian Real Estate Association

Data Provided by: Toronto Regional Real Estate Board

Last Modified: 14/05/2024 12:25:22 AM

Listing Office: SOTHEBY'S INTERNATIONAL REALTY CANADA